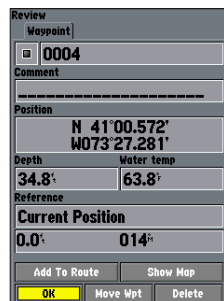


## Marking a Waypoint

### To mark your current location:

1. Press and hold **ENTER/MARK** until the Review Waypoint Page appears, and then release it. The GPSMAP 292/298 captures its current location and creates a default name and symbol for the new waypoint.
2. To accept the waypoint with the default information, press **ENTER**, or to change any waypoint information, highlight the appropriate field and press **ENTER**.



Review Waypoint Page

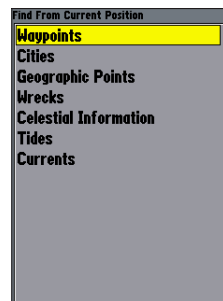
### To create a new waypoint from a map feature:

1. Use the **ROCKER** to move the pointer and highlight the map feature you want.
2. Press **ENTER/MARK** to capture the pointer location. The Review Page for the selected map feature appears.
3. To accept the waypoint with the default information, press **ENTER**.

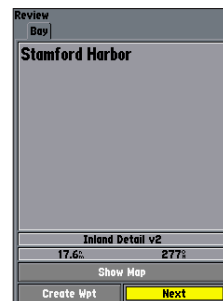
## Finding an Item

### To find an item from your current location:

1. From any page, press **FIND** to open the Find From Current Position Page.
2. Highlight a category, and press **ENTER**. For some categories, you might need to select multiple subcategories.
3. Highlight an item in the search results list, and press **ENTER**. The Review Page appears showing item information, map location, chart name, distance/bearing, and options for creating a waypoint or viewing the next item in the search results list.



Find From Current Position



Review Page



# GPSMAP® 292/298

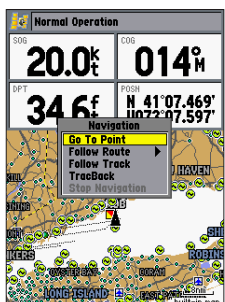
quick reference guide



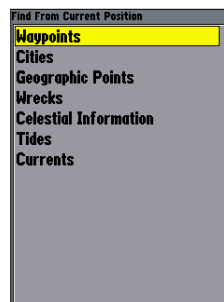
## Navigating to a Destination

### To use the NAV key:

1. Press **NAV** to access the Navigation menu.
2. Highlight **Go To Point**, **Follow Route**, **Follow Track**, or **TracBack**, and press **ENTER**.
3. Use the **ROCKER** to highlight a point, track, or route from the list, and press **ENTER**.
4. If you selected a point, press **ENTER** again with **Go To** highlighted. If you selected a route or saved track, choose from the selections, and press **ENTER** to begin navigation.



Navigation Menu From Present Location



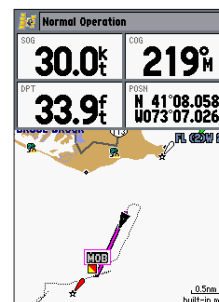
Go To Point—Find From Current Position

## MOB (Man OverBoard)

The Man OverBoard function (MOB) simultaneously marks and sets a course back to the marked location for quick response to emergency situations.

### To start the MOB function:

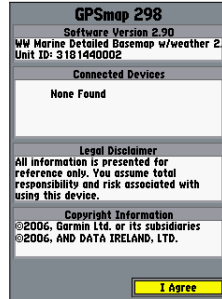
1. Press and hold **NAV/MOB**.
2. Press **ENTER** to begin navigating to the MOB location.
3. To stop navigation to the MOB location, press **NAV**, highlight **Stop Navigation**, and press **ENTER**.



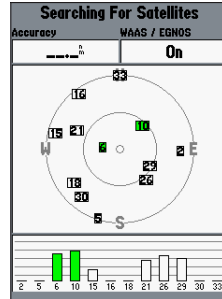
MOB Navigation Back to a Location

## To turn on the GPSMAP 292/298:

1. Press and hold the **POWER** key until the power tone sounds, and then release the **POWER** key. The title page, and then the Warning Page appears while the unit conducts a self-test.
2. When the self-test is complete, press **ENTER** to agree and acknowledge the warning.



Warning Page



Satellite Page

## To turn off the GPSMAP 292/298:

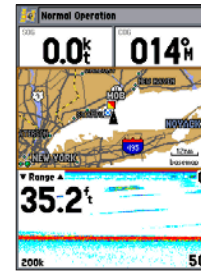
1. Press and hold the **POWER** key.
2. When the screen is blank, release the **POWER** key.

The GPSMAP 292/298 contains seven main pages.

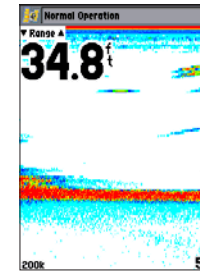
## To cycle through main pages: Press **PAGE**.



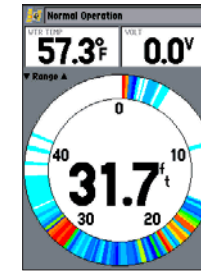
Map Page



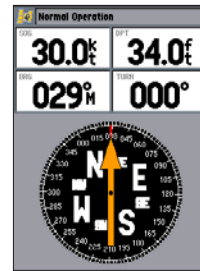
Map Split Page



Sonar Page



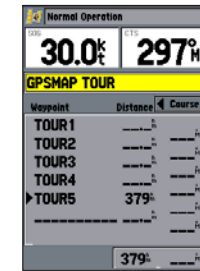
Flasher Page



Compass Page



3D Highway Page



Active Route Page

The Map Split, Sonar, and Flasher Pages do not appear unless the unit is receiving sonar information.



**POWER/BACKLIGHT**—press and hold for two seconds to turn the unit on or off. Press and release to adjust the screen backlighting.



**RANGE**—press up to increase, or press down to decrease the range of the Map Page, Highway Page, and other range-related functions.



**ROCKER**—press up, down, right, or left to move through lists, highlight fields, select options and locations, enter data, or move the map pointer.



**PAGE**—press to cycle through the main pages in sequence and return the display from a sub page to a main page.



**QUIT**—press to return to a previous page, restore a data field's previous value, and exit out of menus.



**ENTER**—press to select highlighted fields, confirm menu options and enter data.

**MARK**—press and hold for two seconds to capture your current location and open the Review Waypoint Page.



**ADJ**—press to show available options and features for the current function.

**MENU**—press and hold to open the Main Menu.



**NAV**—press and release to access navigation options.

**MOB** (Man OverBoard)—press and hold to mark your current location and instantly set a return course.



**DATA**—press to toggle the display of a main page with/without function windows and data fields.

**CNFG**—press and hold to open the Configuration window to customize main pages.

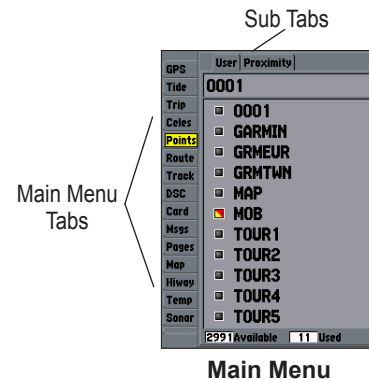


**FIND**—press to initiate the Find options, so you can search for user points, map items, and any optional data card information.

# Main Menu

## To change a setting using the Main Menu:

1. From any page, press and hold the **ADJ/MENU** key to open the Main Menu.
2. Use the **ROCKER** to select a tab, and then press right or left on the **ROCKER** to select a sub tab.
3. Highlight the field you want to change, and press **ENTER**.
4. Make any changes, and press **ENTER**.
5. Press **QUIT** to return to the main page.



# Adjusting the Backlight

## To adjust the backlight level:

1. Press and release the **POWER** key.
2. Press up or down on the **ROCKER** to adjust the backlight level.
3. Press **ENTER** to accept.

