



Printing a Mounting Template

NOTICE

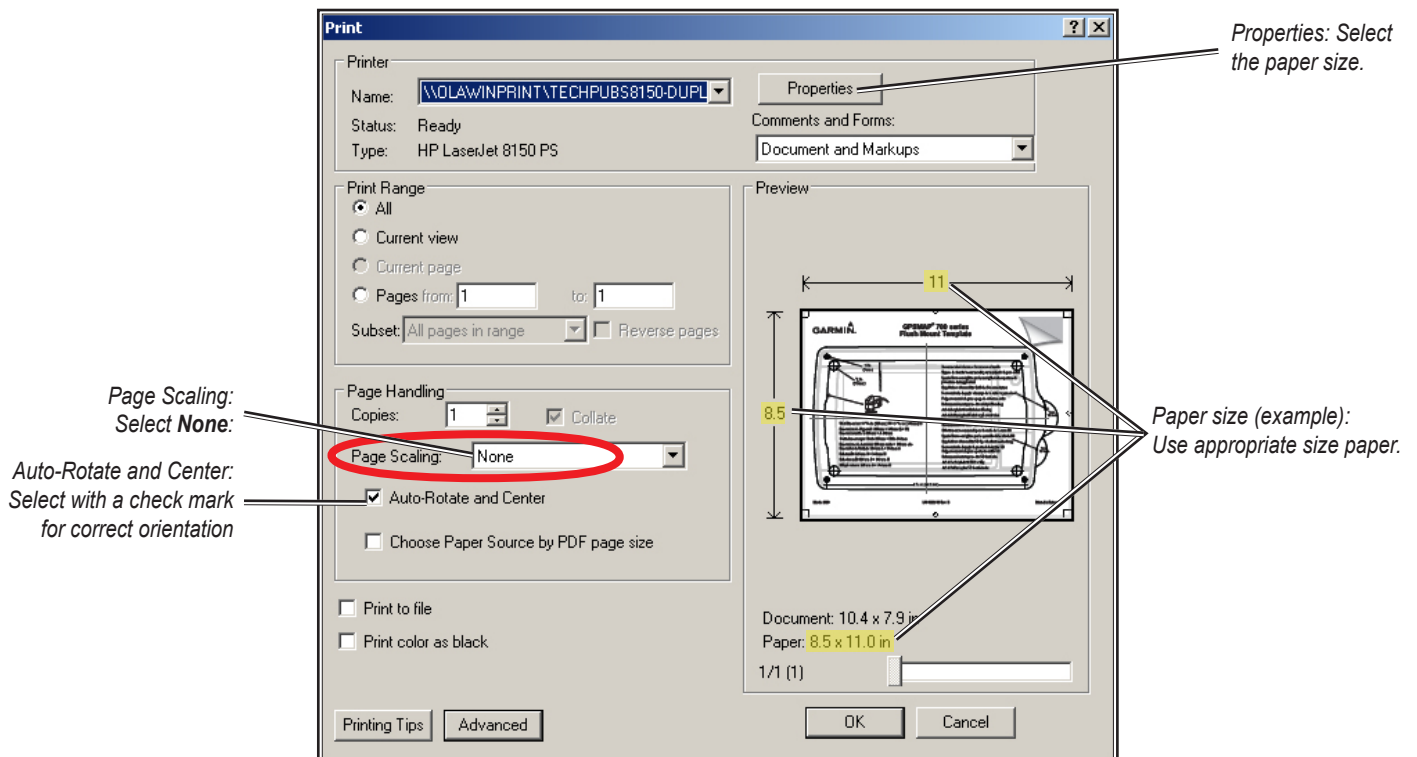
These instructions for printing a mounting template must be followed precisely. Failure to do so may result in incorrect dimensions on the template and an incorrect cutout (too large or too small) on the mounting surface of your boat.

To print the attached mounting template, check the dimensions of the template and select the appropriate size of paper. Both the length and width measurements are indicated on the template.

The paper size must be larger than the dimensions of the template. Select the paper size using the **Properties** button in the Adobe Acrobat print dialog box.

Select **Auto-Rotate and Center** to ensure the template prints in the correct orientation.

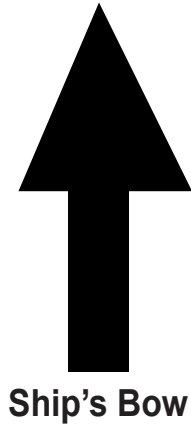
IMPORTANT: When printing the flush mount template, set **Page Scaling** in the Adobe Acrobat print dialog box to **None**.



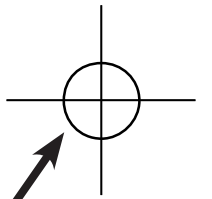
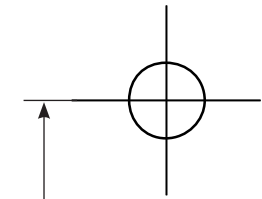
NOTICE

After printing and before cutting the mounting surface, measure the printed template to ensure both the length and the width printed at the correct size and to ensure that the dimensions of the printed template match the actual size of your mount. Garmin is not responsible for any damages or expenses resulting from a miscut mounting surface arising from a failure to follow these instructions.

GARMIN™
GMR 18/24 MOUNTING TEMPLATE

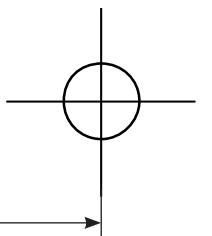
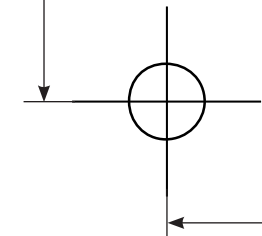


Ship's Bow



Use 9.5mm (7/16") drill bit

141.5 mm
(5.57")



233.0 mm
(9.17")