

# GPS 35 USB



installation  
and  
quick  
start  
guide

© 2001 GARMIN Corporation

GARMIN International, Inc.

1200 E 151<sup>st</sup> Street, Olathe, Kansas 66062 U.S.A.

Tel. 913/397.8200

Fax. 913/397.8282

GARMIN (Europe) Ltd.

Unit 5, The Quadrangle, Abbey Park Industrial Estate, Romsey, SO51 9AQ U.K.

Tel. 44/1794.519944

Fax. 44/1794.519222

GARMIN Corp.

No. 68, Jangshu 2<sup>nd</sup> Road, Shijr, Taipei County, Taiwan

Tel. 886/2.2642.9199

Fax. 886/2.2642.9099

All rights reserved. Except as expressly provided herein, no part of this manual may be reproduced, copied, transmitted, disseminated, downloaded or stored in any storage medium, for any purpose without prior written consent of GARMIN Corporation. GARMIN Corporation hereby grants permission to download a single copy of this manual onto a hard drive or other electronic storage medium to be viewed for personal use, provided that such electronic or printed copy of this manual or revision must contain the complete text of this copyright notice and provided further that any unauthorized commercial distribution of this manual is strictly prohibited.

Information in this manual is subject to change without notice. GARMIN Corporation reserves the right to change or improve its products and to make changes in the content without obligation to notify any person or organization of such changes. Visit the GARMIN website ([www.garmin.com](http://www.garmin.com)) for current updates and supplemental information concerning the use and operation of this and other GARMIN products.

GARMIN® and AutoLocate® are registered trademarks of GARMIN Corporation and may not be used without the express permission of GARMIN Corporation. Windows 95®, Windows NT®, Windows 98/ME®, and Windows 2000® are registered trademarks of Microsoft Corporation.

Thank you for choosing the GARMIN GPS 35 USB. The GPS 35 USB (Universal Serial Bus) is an intelligent GPS (Global Positioning System) that connects to a PC USB port or USB hub via the USB port. To get successful results from your GPS 35 USB, take time to read through this quick start guide.

For more detailed technical specifications and operating information, the GPS 35-xVx Technical Specifications are available for free download from the GARMIN web site at <http://www.garmin.com/manuals/spec35.pdf>. You may also order a copy from GARMIN or your GARMIN dealer.

This guide is organized into two sections:

The **Introduction** section provides package contents, system requirements and a description of the GPS 35 USB.

The **Installation** section provides installation and driver setup and initialization instructions for the GPS 35 USB.

### **Minimum System Requirements**

- IBM-Compatible PC with Pentium-class processor
- CD-ROM drive
- Mouse or other pointing device
- Windows 98/ME or Windows 2000 operating system\*
- Available Universal Serial Bus port (USB), Type A (downstream)

\*The GPS 35 USB is not designed to operate with Windows 95 or Windows NT.

## Introduction

### About This Manual, System Requirements & Standard Package Contents

#### **Standard Package Contents**

- \* GPS 35 USB
- \* CD-ROM with USB Device Drivers for Windows 98/ME and 2000
- \* Quick Start Guide for the GPS 35 USB

*If any items are missing, please contact your GARMIN dealer immediately,*

#### **Optional Accessories**

- \* Flange Mount
- \* Magnetic Mount
- \* Suction Cup Mount
- \* Trunk Lip Mount

# Introduction

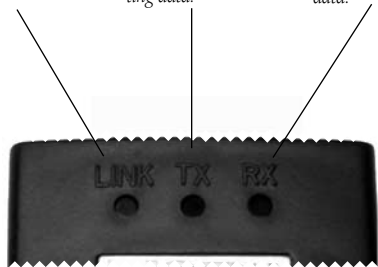
## Features

### STATUS LIGHTS

**LINK-** Shows a green LED when connection to the PC is established.

**TX (Transmit)-** Red LED will light when the PC is transmitting data.

**RX (Receive)-** Red LED will light when the PC is receiving data.



## **Installation of the GPS 35 USB and Device Drivers**

Since there are several accessory mounts available for the GPS 35 USB, separate hardware mounting instructions are included with each of the various antenna accessories. Please refer to the instructions included with the accessory for mounting details of the GPS 35 USB. See page 1 for a list of available accessories. Keep in mind that GPS signals do not travel through buildings, metal, roofs, road signs, people or other significant structures. Here are a few recommended vehicle mounting locations for the GPS 35 USB:



### **To Install the Software Device Drivers**

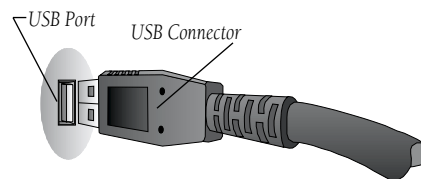
1. Connect the USB connector on the end of the GPS 35 USB to the USB port on the computer (Fig. 1). Most computers have two USB Ports. Either port will work. The computer does not need to be turned off when connecting or disconnecting the GPS 35 USB. Since the GPS 35 USB is powered by the USB port, no other power connections are needed.



*Use care to insert the USB connector correctly. Do not force the connection as this may damage the USB port on your computer or the USB connector on the GPS 35 USB. If using a USB hub, you may experience device detection or transfer problems. Using a different brand/model hub or connecting the GPS 35 USB directly to the PC may produce better results.*

After connecting the GPS 35 USB to your computer you must install the device drivers from the CD-ROM provided with the GPS 35 USB.

## **Driver Installation**



**Fig. 1** USB (Universal Serial Bus) Port and USB Connector



**NOTES:** *If Windows does not recognize that the GPS 35 USB has been connected, the USB port on your PC may not be properly configured. Contact your computer supplier for assistance configuring the USB port.*

*Do Not Install the driver under "Add New Hardware" as this may cause a system crash. Follow the supplied instructions.*

*In case the installation is incomplete or interrupted, remove the GPS 35 USB and follow the uninstall steps on page 6. When done, repeat the installation.*

# Driver Installation



Figure 2



Figure 3

2. The computer will recognize the GPS 35 USB as a USB device, open the Add New Hardware Wizard and search for the device drivers. Click on "Next".
3. Insert the GPS 35 USB Driver CD-ROM into your computer's CD-ROM drive. Note: The GPS 35 USB uses the same device driver CD-ROM as the GARMIN USB to RS232 Converter Cable.
4. The next screen will ask you if you want it to search for the best driver for your device or if you want to display a list to choose from. Select "Search for the best driver for your device" and click on "Next".



5. The next screen will display a list of locations to search for the new drivers. Select "Specify a location:" and type one of the following:  
For Windows 98/ME, type <CD-ROM drive letter>:\win98\_me (Fig. 2)  
For Windows 2000, type <CD-ROM drive letter>:\win2000 (Fig. 3)
6. The Wizard will search for the driver and then display a window to tell you it is ready to install. Click on "Next".

- When installation is complete a window will display that shows the device name (USB to Serial Interface Controller) and states the driver installation is finished. Click on "Finish".



- To make sure the GPS 35 USB has been successfully installed: From the Control Panel, click on "System", then the "Device Manager" tab, then click the [+] by "Ports". Since the GPS 35 USB utilizes components of GARMIN's USB to RS232 Serial Converter, it will show a new item called "Serial on USB (COMx)". In the same window, click on the [+] by "Universal serial bus controller". It will show a new item called "USB to Serial Interface Controller". (Fig. 4)

## **Initialization**

Once you have the GPS 35 USB installed, it will begin searching for satellites in AutoLocate mode. This process will initialize the receiver, and should compute your position in no more than 5 minutes. After the GPS has been initialized, you will usually acquire a fix within a minute. If you have trouble acquiring a fix or losing satellite signals, double check the installation to verify that the antenna is correctly installed with a clear view of the sky. If you move more than 500 miles with the receiver off, the GPS will automatically re-initialize itself to your new position (which may again take up to another 5 minutes).

## **Driver Installation/Initialization**

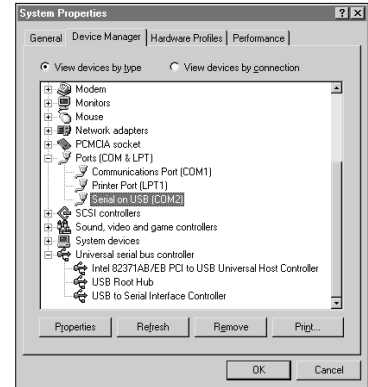


Figure 4

## Uninstalling the Drivers

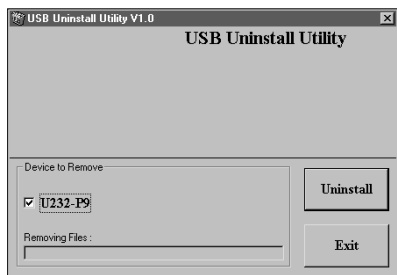


Figure 5

### To remove the GPS 35 USB drivers from your computer

1. Insert the GPS 35 USB Driver CD-ROM into your computer's CD-ROM drive.
2. Unplug the USB connector from your computer.
3. From your Desktop, click "Start" then "Run".
4. Type: <CD-ROM drive letter>:\USBUninstall.exe  
(Example if your CD-ROM drive letter is 'E': E:\usbuninstall.exe)
5. Click and put a check in the "U232-P9" box. (Fig. 5)
6. Click "Uninstall". Reboot your system when prompted. Remove the GPS 35 USB driver CD when done.

### Disconnecting the GPS 35 USB from Your Computer

After the GPS 35 USB has been successfully installed (hardware and software), disconnecting and reconnecting the GPS 35 USB can be performed without additional installation steps.

1. Close any programs which are receiving input from the GPS 35.
2. Unplug the USB connector from your computer. You do not need to turn the computer off before removing or inserting the USB connector. The next time you need to use the GPS 35 USB, simply plug it into your USB port and use as needed.



## **LIMITED WARRANTY**

GARMIN Corporation warrants this product to be free from defects in materials and workmanship for one year from the date of purchase. GARMIN will, at its sole option, repair or replace any components that fail in normal use. Such repairs or replacement will be made at no charge to the customer for parts or labor. The customer is, however, responsible for any transportation costs. This warranty does not cover failures due to abuse, misuse, accident or unauthorized alteration or repairs.

THE WARRANTIES AND REMEDIES CONTAINED HEREIN ARE EXCLUSIVE AND IN LIEU OF ALL OTHER WARRANTIES EXPRESS OR IMPLIED OR STATUTORY, INCLUDING ANY LIABILITY ARISING UNDER ANY WARRANTY OF MERCHANTABILITY OR FITNESS FOR A PARTICULAR PURPOSE, STATUTORY OR OTHERWISE. THIS WARRANTY GIVES YOU SPECIFIC LEGAL RIGHTS, WHICH MAY VARY FROM STATE TO STATE.

IN NO EVENT SHALL GARMIN BE LIABLE FOR ANY INCIDENTAL, SPECIAL, INDIRECT OR CONSEQUENTIAL DAMAGES, WHETHER RESULTING FROM THE USE, MISUSE, OR INABILITY TO USE THIS PRODUCT OR FROM DEFECTS IN THE PRODUCT. SOME STATES DO NOT ALLOW THE EXCLUSION OF INCIDENTAL OR CONSEQUENTIAL DAMAGES, SO THE ABOVE LIMITATIONS MAY NOT APPLY TO YOU.

To obtain warranty service, call the GARMIN Customer Service department (913/397.8200) for a returned merchandise tracking number. The unit should be securely packaged with the tracking number clearly marked on the outside of the package and sent freight prepaid and insured to a GARMIN warranty service station. A copy of the original sales receipt is required as the proof of purchase for warranty repairs. GARMIN retains the exclusive right to repair or replace the unit or software or offer a full refund of the purchase price at its sole discretion. SUCH REMEDY SHALL BE YOUR SOLE AND EXCLUSIVE REMEDY FOR ANY BREACH OF WARRANTY.



©2001 GARMIN Corporation

GARMIN International  
1200 East 151st Street, Olathe, Kansas 66062, U.S.A.

GARMIN (Europe) Ltd.  
Unit 5, The Quadrangle, Abbey Park Industrial Estate, Romsey, SO51 9AQ, U.K.

GARMIN Corporation  
No 68, Jangshu 2<sup>nd</sup> Road, Shijr, Taipei County, Taiwan

[www.garmin.com](http://www.garmin.com)

Part Number 190-00245-00 Rev. A