

All rights reserved. Except as expressly provided herein, no part of this manual may be reproduced, copied, transmitted, disseminated, downloaded or stored in any storage medium, for any purpose without the express prior written consent of Garmin. Garmin hereby grants permission to download a single copy of this manual onto a hard drive or other electronic storage medium to be viewed and to print one copy of this manual or of any revision hereto, provided that such electronic or printed copy of this manual must contain the complete text of this copyright notice and provided further that any unauthorized commercial distribution of this manual or any revision hereto is strictly prohibited.

Information in this document is subject to change without notice. Garmin reserves the right to change or improve its products and to make changes in the content without obligation to notify any person or organization of such changes or improvements. Visit the Garmin Web site ([www.garmin.com](http://www.garmin.com)) for current updates and supplemental information concerning the use and operation of this and other Garmin products.

Garmin® is a trademark of Garmin Ltd. or its subsidiaries, registered in the USA and other countries. GPSMAP® is a trademark of Garmin Ltd. or its subsidiaries. This trademark may not be used without the express permission of Garmin.

Refer to your chartplotter owner's manual or product information sheet to view the warranty, warnings, cautions, and the software license agreement.

Visit the Garmin Web site ([www.garmin.com](http://www.garmin.com)) for current updates and supplemental information concerning the use and operation of this and other Garmin products.

## FCC Compliance

This product has been tested and found to comply with Part 15 of the FCC interference limits for Class B digital devices FOR HOME OR OFFICE USE. These limits are designed to provide more reasonable protection against harmful interference in a residential installation, and are more stringent than "outdoor" requirements.

Operation of this device is subject to the following conditions: (1) this device may not cause harmful interference, and (2) this device must accept any interference received, including interference that may cause undesired operation.

This equipment generates, uses, and can radiate radio frequency energy and may cause harmful interference to radio communications if not installed and used in accordance with the instructions. However, there is no guarantee that interference will not occur in a particular installation. If this equipment does cause harmful interference to radio or television reception, which can be determined by turning the equipment off and on, the user is encouraged to try to correct the interference by one of the following measures:

- Reorient or relocate the receiving antenna.
- Increase the separation between the equipment and the receiver.
- Connect the equipment into an outlet that is on a different circuit from the GPS unit.
- Consult the dealer or an experienced radio/TV technician for help.

This product does not contain any user-serviceable parts. Repairs should only be made by an authorized Garmin service center. Unauthorized repairs or modifications could result in permanent damage to the equipment, and void your warranty and your authority to operate this device under Part 15 regulations.

Garmin International, Inc.  
1200 East 151st Street, Olathe, Kansas 66062, USA

Garmin (Europe) Ltd.  
Liberty House, Hounsdown Business Park, Southampton, Hampshire, SO40 9RB UK

Garmin Corporation  
No. 68, Zhangshu 2<sup>nd</sup> Road, Xizhi Dist., New Taipei City, 221, Taiwan (R.O.C.)

[www.garmin.com](http://www.garmin.com)

# RF Remote owner's manual

For Use with GPSMAP 4000/5000 Series Chartplotters



**GARMIN**

## Introduction

The RF Remote is for use with all Garmin 4000/5000 and 6000/7000 Series chartplotters.

The remote operates on two AAA batteries (not included). To replace the batteries, use a small Phillips screwdriver to open the access cover on the rear panel. Use alkaline batteries for best results.

Ensure your chartplotter has the current software, available at [www.garmin.com](http://www.garmin.com).

## Description of Buttons

**Pairing buttons**—press and hold to pair a remote with a chartplotter. Press and release to select a paired chartplotter.

**Rocker**—press up, down, left, and right to move the map pointer and enter data.

**SELECT**—press to confirm messages and select items.

**MENU**—press to view additional options on most screens.

**LOCK**—press to lock all remote functions. Press again to unlock. The remote beeps when it is locked and a button is pressed.

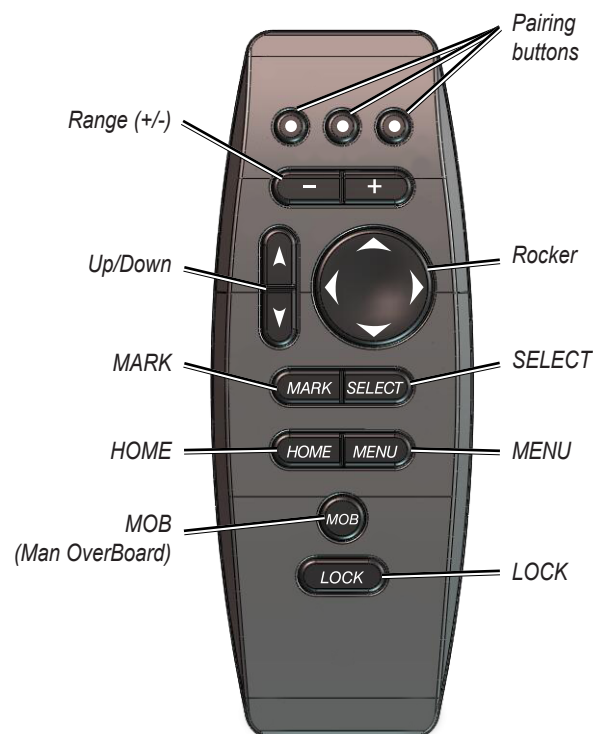
**MOB (Man Overboard)**—press to mark your current location as a Man Overboard point.

**HOME**—press at any time to return to the Home screen.

**MARK**—press to mark your current location as a waypoint.

**Up/Down**—press to highlight menu items.

**Range (+/-)**—press up (+) and down (-) to increase and decrease the map zoom scale.



## Getting Started

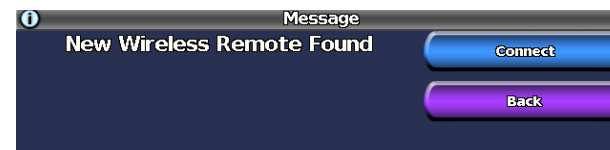
Use one of the three pairing buttons to pair your remote with a specific chartplotter. If you have more than one chartplotter, this allows you to separately control up to three chartplotters.

### To allow wireless connections on your chartplotter:

1. From the Home screen, select **Configure > Communications > Wireless Devices**.
2. Set **Allow New Connections** to **Yes**.

### To pair the remote with a chartplotter:

1. Press and hold one of the **Pairing Buttons** until “New Wireless Remote Found” appears on the chartplotter.



2. Select **Connect** on your chartplotter.

To select a chartplotter, press and release the **Pairing Button** that is paired with the chartplotter you want to control.

## Tips for Best Operation

- Stand in front of the chartplotter when using the remote, no further than 10 meters (32 feet) away.
- Depending on the installation, you may need to stand closer than 10 meters (32 feet). The metal case on the rear and sides of the chartplotter greatly reduce the remote range.
- Be sure there are no obstructions between the remote and the chartplotter.

## Specifications

- **Size:** 135 mm H x 50 mm W x 25.7 mm D (5.3" x 2" x 1")
- **Weight:** 77 g (2.7 oz), without battery  
101 g (3.6 oz), with batteries
- **Case:** waterproof to IEC 529-IPX-7
- **Frequency:** 2.46 GHz
- **Max Range:** 10 m (32 ft); this value may vary slightly, depending on the installation of the chartplotter
- **Battery Life:** 100 days when used 15 minutes per day  
3 years shelf life
- **Operating Temperature Range:** -15°C to 70°C  
(5°F to 158°F)
- **Storage Temperature Range:** -40°C to 85°C  
(-40°F to 185°F)