



Printing a Mounting Template

NOTICE

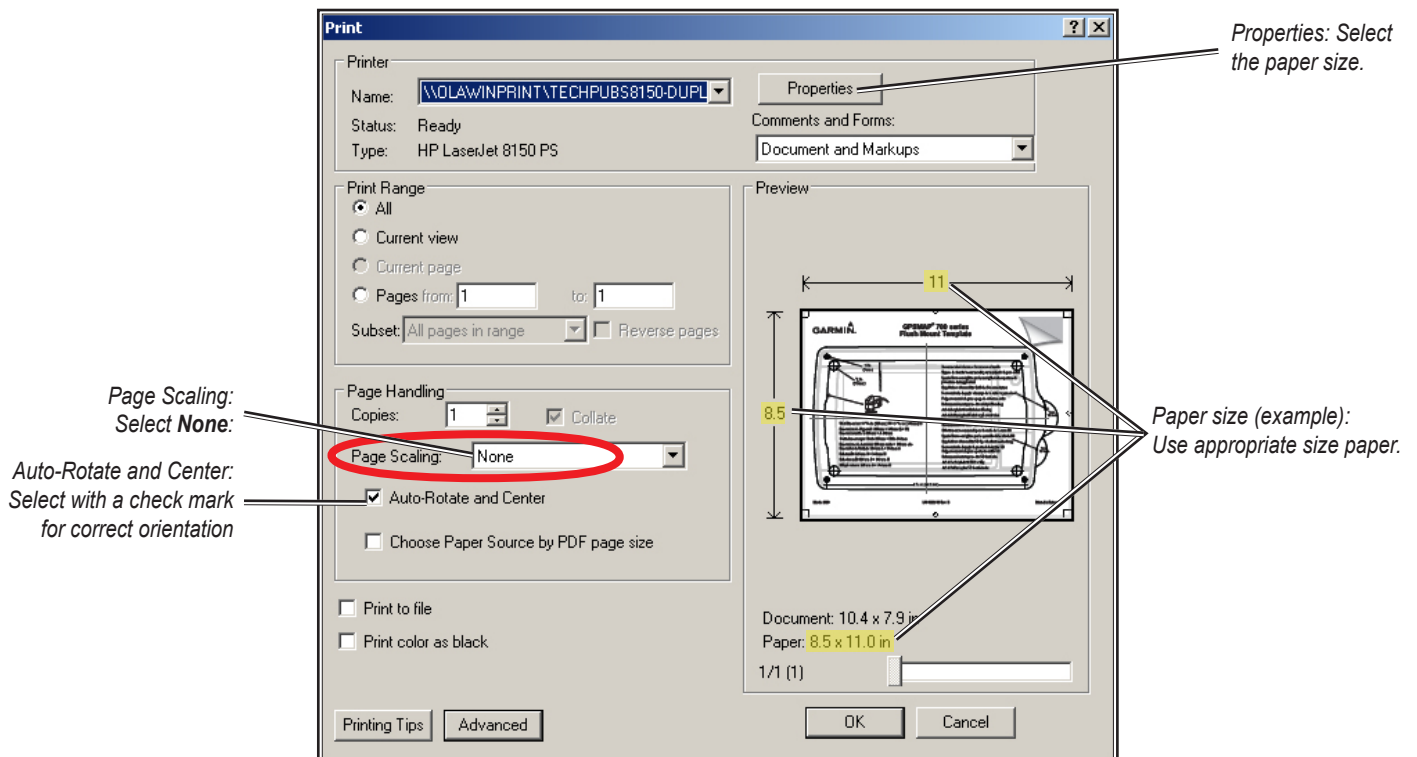
These instructions for printing a mounting template must be followed precisely. Failure to do so may result in incorrect dimensions on the template and an incorrect cutout (too large or too small) on the mounting surface of your boat.

To print the attached mounting template, check the dimensions of the template and select the appropriate size of paper. Both the length and width measurements are indicated on the template.

The paper size must be larger than the dimensions of the template. Select the paper size using the **Properties** button in the Adobe Acrobat print dialog box.

Select **Auto-Rotate and Center** to ensure the template prints in the correct orientation.

IMPORTANT: When printing the flush mount template, set **Page Scaling** in the Adobe Acrobat print dialog box to **None**.

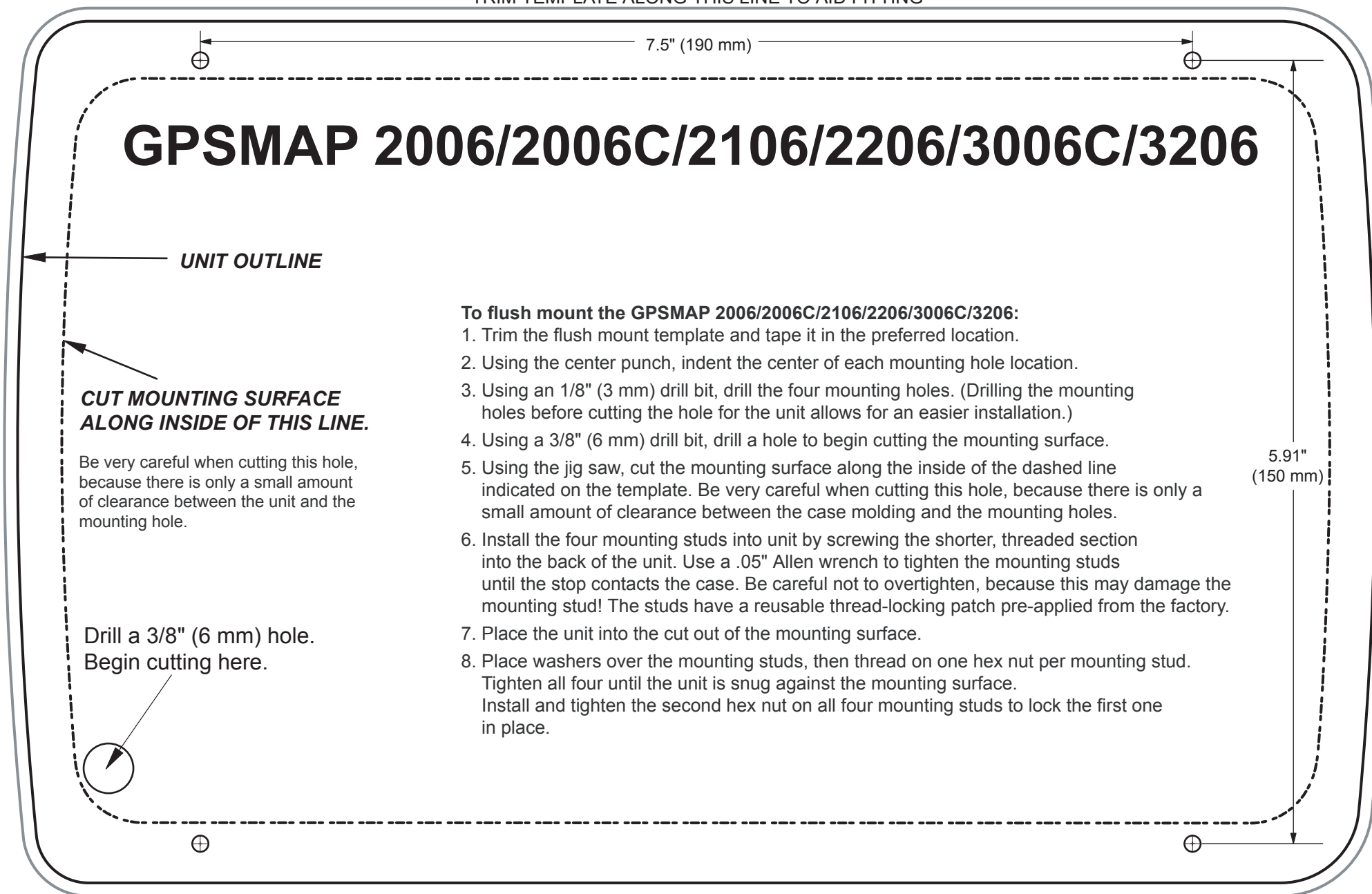


NOTICE

After printing and before cutting the mounting surface, measure the printed template to ensure both the length and the width printed at the correct size and to ensure that the dimensions of the printed template match the actual size of your mount. Garmin is not responsible for any damages or expenses resulting from a miscut mounting surface arising from a failure to follow these instructions.

GPSMAP 2x06/2x10/3x06/3x10 FLUSH MOUNT TEMPLATES

TRIM TEMPLATE ALONG THIS LINE TO AID FITTING



GPSMAP 2006/2006C/2106/2206/3006C/3206

UNIT OUTLINE

**CUT MOUNTING SURFACE
ALONG INSIDE OF THIS LINE.**

Be very careful when cutting this hole,
because there is only a small amount
of clearance between the unit and the
mounting hole.

Drill a 3/8" (6 mm) hole.
Begin cutting here.

To flush mount the GPSMAP 2006/2006C/2106/2206/3006C/3206:

1. Trim the flush mount template and tape it in the preferred location.
2. Using the center punch, indent the center of each mounting hole location.
3. Using an 1/8" (3 mm) drill bit, drill the four mounting holes. (Drilling the mounting holes before cutting the hole for the unit allows for an easier installation.)
4. Using a 3/8" (6 mm) drill bit, drill a hole to begin cutting the mounting surface.
5. Using the jig saw, cut the mounting surface along the inside of the dashed line indicated on the template. Be very careful when cutting this hole, because there is only a small amount of clearance between the case molding and the mounting holes.
6. Install the four mounting studs into unit by screwing the shorter, threaded section into the back of the unit. Use a .05" Allen wrench to tighten the mounting studs until the stop contacts the case. Be careful not to overtighten, because this may damage the mounting stud! The studs have a reusable thread-locking patch pre-applied from the factory.
7. Place the unit into the cut out of the mounting surface.
8. Place washers over the mounting studs, then thread on one hex nut per mounting stud. Tighten all four until the unit is snug against the mounting surface. Install and tighten the second hex nut on all four mounting studs to lock the first one in place.

TRIM TEMPLATE ALONG THIS LINE TO AID FITTING

9.05" (230 mm)

GPSMAP 2010/2010C/2110/2210/3010C/3210

**CUT MOUNTING SURFACE
ALONG INSIDE OF THIS LINE.**

Be very careful when cutting this hole, because there is only a small amount of clearance between the unit and the mounting hole.

UNIT OUTLINE

Drill a 3/8" (6 mm) hole.
Begin cutting here.

8.19"
(208 mm)

To flush mount the GPSMAP 2010/2010C/2110/2210/3010C/3210:

1. Trim the flush mount template and tape in the preferred location.
2. Using the center punch, indent the center of each mounting hole location.
3. Using an 1/8" (3 mm) drill bit, drill the four mounting holes. (Drilling the mounting holes before cutting the hole for the unit allows for an easier installation.)
4. Using a 3/8" (6 mm) drill bit, drill a hole to begin cutting the mounting surface.
5. Using the jig saw, cut the mounting surface along the inside of the dashed line indicated on the template. Be very careful when cutting this hole, because there is only a small amount of clearance between the case molding and the mounting holes.
6. Install the four mounting studs into unit by screwing the shorter, threaded section into the back of the unit. Use a .05" Allen wrench to tighten the mounting studs until the stop contacts the case. Be careful not to overtighten, because this may damage the mounting stud! The studs have a reusable thread-locking patch pre-applied from the factory.
7. Place the unit into the cut out of the mounting surface.
8. Place washers over the mounting studs, and then thread on one hex nut per mounting stud. Tighten all four until the unit is snug against the mounting surface. Install and tighten the second hex nut on all four mounting studs to lock the first one in place.