

Marking a Waypoint

To mark your current location:

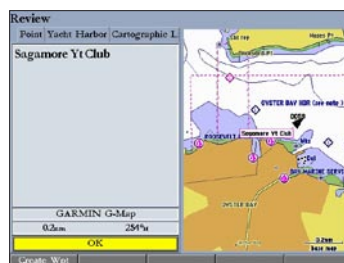
1. Press and hold **ENTER/MARK** until the Review Waypoint Page appears. The GPSMAP 3206/3210 captures your current location, and then creates a default name and symbol for the new waypoint.
2. To accept the waypoint with the default information, press **ENTER**, or to change any waypoint information, highlight the appropriate field and press **ENTER**.



Review Waypoint Page

To create a new waypoint from a map feature:

1. Use the map pointer to highlight a map feature.
2. Press and release **ENTER/MARK** to capture the pointer location and open the Review Page.
3. Press the **Create Wpt** soft key to open the Review Waypoint Page.
4. To accept the waypoint with the default information, press **ENTER**, or to change any waypoint information, highlight the appropriate field and press **ENTER**.

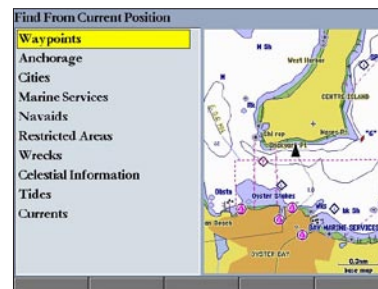


Review Map Point Page

Finding an Item

To find an item from your current location:

1. From any page, press **FIND** to open the Find From Current Position Page.
2. Highlight a category, and press **ENTER**. For some categories, you might need to select multiple subcategories.
3. Highlight an item in the search results list, and press **ENTER**. The Review Page appears showing item information, map location, chart name, distance and bearing, and options for creating a waypoint or viewing the next item in the search results list.



Find From Current Position Page



Review Waypoint Page



GPSMAP® 3206/3210

quick reference guide



Navigating to a Destination

To navigate to a destination

1. Press **NAV** to access the Navigation menu.
2. Highlight **Go To Point**, **Follow Route**, **Follow Track**, or **TracBack**, and press **ENTER**.
3. Use the **ROCKER** to highlight a point, track, or route from the list, and press **ENTER**.
4. If you selected a point, press the **Go To** soft key. If you selected a route or saved track, choose from the selections, and press **ENTER**.
5. Follow the magenta route created on the Map Page. You can also use the Compass Page to help you navigate.



Navigation Menu



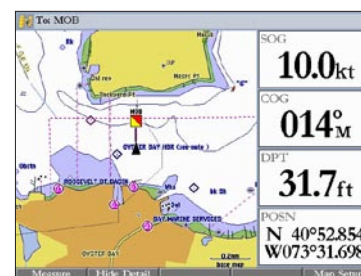
Navigation Shown on the Map Page

Using the MOB (Man OverBoard) Feature

The Man OverBoard (MOB) function simultaneously marks and sets a course back to the marked location for quick response to emergency situations.

To start the MOB function:

1. Press and hold **NAV/MOB**. A message appears asking you if you want to begin navigation to the MOB waypoint.
2. Press **ENTER** to begin navigating to the **MOB** location.
3. To stop navigation to the **MOB** location, press **NAV**, highlight **Stop Navigation**, and press **ENTER**.



Man OverBoard

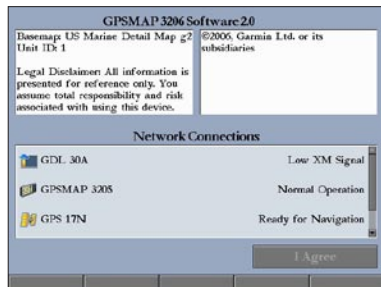
To stop navigation to the MOB location:

1. Press **NAV/MOB**.
2. Highlight **Stop Navigation**, and press **ENTER**.

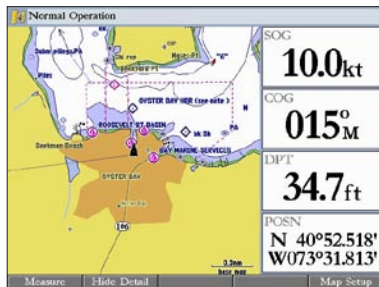
Startup/Shutdown Sequence

To turn on the GPSMAP 3206/3210:

1. Press and hold the **POWER** key.
2. When the **I Agree** on-screen button is highlighted, press **ENTER** to acknowledge the warning and open the Map Page.



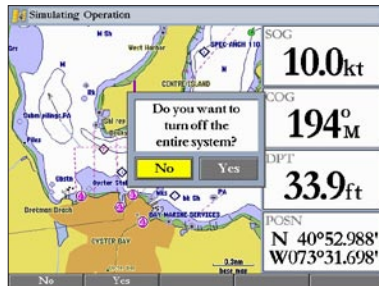
Warning Page



Map Page

To turn off the GPSMAP 3206/3210:

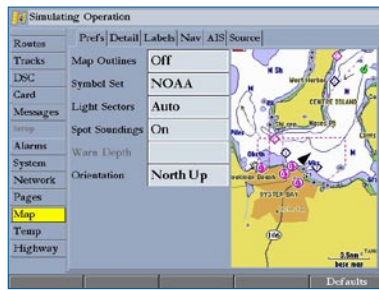
1. Press and hold the **POWER** key.
If one MFD is connected, the unit shuts down. If multiple MFDs are connected, a prompt appears.
2. Select **Yes** to turn off the entire network, or select **No** to put the unit in sleep mode.
3. Press **ENTER**.



Using the Main Menu

To change a setting using the Main Menu:

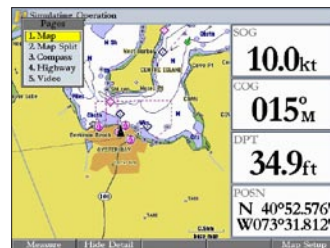
1. From any page, press and hold **ADJ/MENU** to open the Main Menu.
2. Use the **ROCKER** to select a tab, and then press right or left on the **ROCKER** to select a sub tab.
3. Highlight the field you want to change, and press **ENTER**.
4. Make any changes, and press **ENTER**.
5. Press **QUIT** to return to the main page.



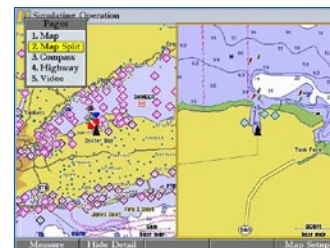
Main Menu

Viewing Main Pages

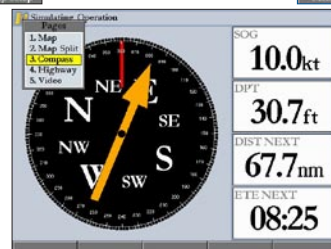
The GPSMAP 3206/3210 contains five main pages. Additional main pages appear as you add optional hardware to the Garmin Marine Network. Press **PAGE** to view each page.



Map Page



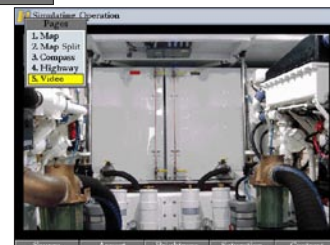
Map Split Page



Compass Page



Highway Page

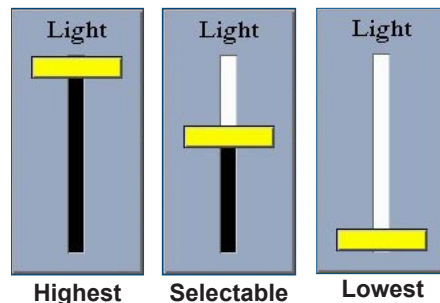


Video Page (Optional)

Adjusting the Backlight

To adjust the backlight level:

1. Press and release the **POWER** key.
2. Press up or down on the **ROCKER** to adjust the backlight level.
3. Press **ENTER** to quit.



Using the GPSMAP 3206/3210 Keypad



POWER/BACKLIGHT—press and hold to turn the unit on or off. Press and release to adjust the screen backlighting.



RANGE—press up to increase, or press down to decrease the range of the Map Page, Highway Page, and other range-related functions.



ROCKER—press up, down, right, or left to move through lists, highlight fields, select options and locations, enter data, or move the map pointer.



PAGE—press to cycle through the main pages in sequence or return from a sub page to a main page.



QUIT—press to return to a previous page, restore a data field's previous value, or exit out of menus.



ENTER—press to select highlighted fields, confirm menu options, or enter data.



MARK—press and hold for two seconds to capture your current location and open the Review Waypoint Page.



ADJ—press to show available options and features for the current function.

MENU—press and hold to open the Main Menu.



NAV—press and release to access navigation options.

MOB (Man OverBoard)—press and hold to mark your current location and instantly set a return course.



DATA—press to toggle the display of a main page with or without function windows and data fields.

CNFG—press and hold to open the Configuration window to customize a main page.



FCTN—press to highlight the next available Function window on the split screen.



FIND—press to initiate the Find option, so you can search for user points, map items, and any optional data card information.