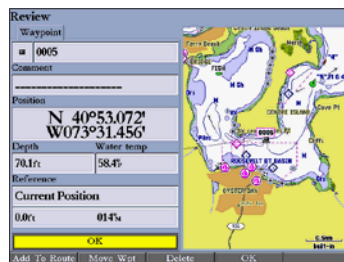


## Marking a Waypoint

### To mark your current location:

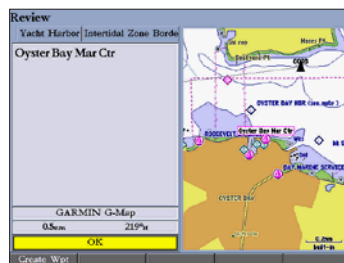
1. Press and hold **ENTER/MARK** until the Review Waypoint Page appears. The GPSMAP 2206/2210 captures your current location, and then creates a default name and symbol for the new waypoint.
2. To accept the waypoint with the default information, press **ENTER**, or to change any waypoint information, highlight the appropriate field and press **ENTER**.



Review Waypoint Page

### To create a new waypoint from a map feature:

1. Use the map pointer to highlight a map feature.
2. Press and release **ENTER/MARK** to capture the pointer location and open the Review Page.
3. Press the **Create Wpt** soft key to open the Review Waypoint Page.
4. To accept the waypoint with the default information, press **ENTER**, or to change any waypoint information, highlight the appropriate field and press **ENTER**.

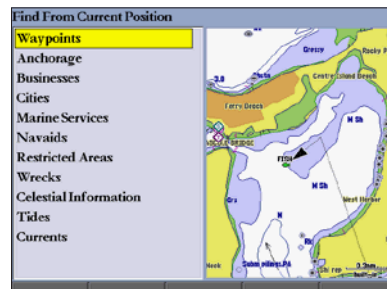


Review Map Point Page

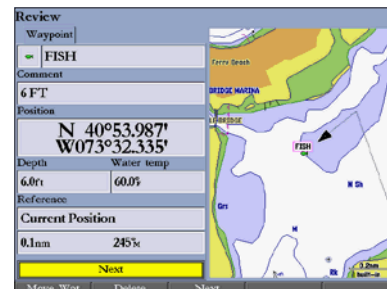
## Finding an Item

### To find an item from your current location:

1. From any page, press **FIND** to open the Find From Current Position Page.
2. Highlight a category, and press **ENTER**. For some categories, you might need to select multiple subcategories.
3. Highlight an item in the search results list, and press **ENTER**. The Review Page appears showing item information, map location, chart name, distance and bearing, and options for creating a waypoint or viewing the next item in the search results list.



Find From Current Position Page



Review Waypoint Page



# GPSMAP® 2206/2210

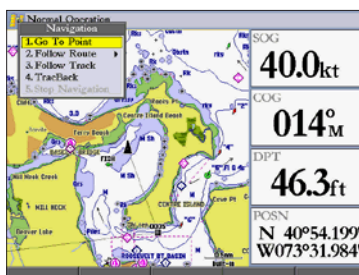
## quick reference guide



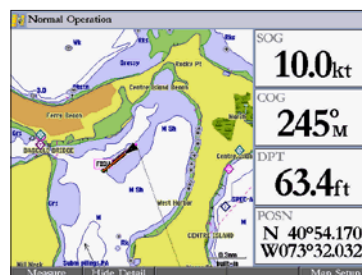
## Navigating to a Destination

### To navigate to a destination

1. Press **NAV** to access the Navigation menu.
2. Highlight **Go To Point**, **Follow Route**, **Follow Track**, or **TracBack**, and press **ENTER**.
3. Use the **ROCKER** to highlight a point, track, or route from the list, and press **ENTER**.
4. If you selected a point, press the **Go To** soft key. If you selected a route or saved track, choose from the selections, and press **ENTER**.
5. Follow the red route created on the Map Page. You can also use the Compass Page to help you navigate.



Navigation Menu



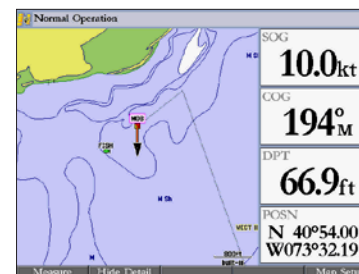
Navigation on the Map Page

## Using the MOB (Man OverBoard) Feature

The Man OverBoard (MOB) function simultaneously marks and sets a course back to the marked location for quick response to emergency situations.

### To start the MOB function:

1. Press and hold **NAV/MOB**. A message appears asking you if you want to begin navigation to the MOB waypoint.
2. Press **ENTER** to begin navigating to the **MOB** location.
3. To stop navigation to the **MOB** location, press **NAV**, highlight **Stop Navigation**, and press **ENTER**.



Man OverBoard

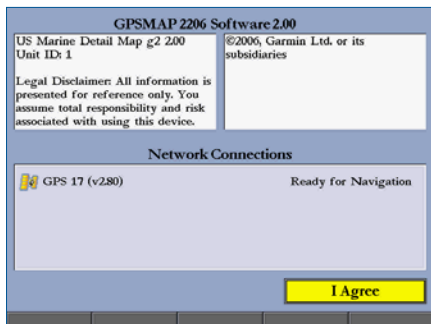
### To stop navigation to the MOB location:

1. Press **NAV/MOB**.
2. Highlight **Stop Navigation**, and press **ENTER**.

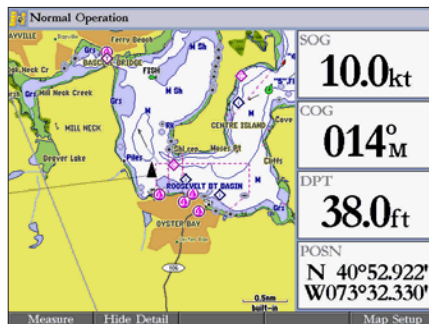
## Startup/Shutdown Sequence

### To turn on the GPSMAP 2206/2210:

1. Press and hold the **POWER** key.
2. When the **I Agree** on-screen button is highlighted, press **ENTER** to acknowledge the warning and open the Map Page.



Warning Page



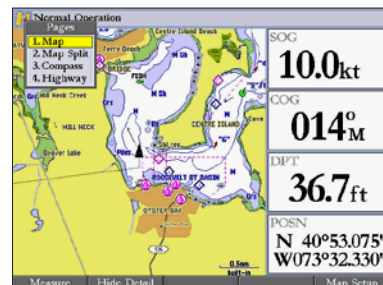
Map Page

### To turn off the GPSMAP 2206/2210:

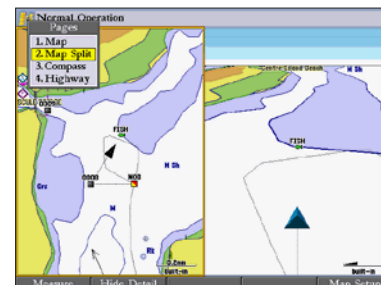
Press and hold the **POWER** key.

## Viewing Main Pages

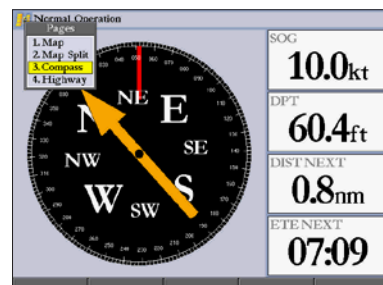
The GPSMAP 2206/2210 contains four main pages. Additional main pages appear as you add optional hardware. Press **PAGE** to view each page.



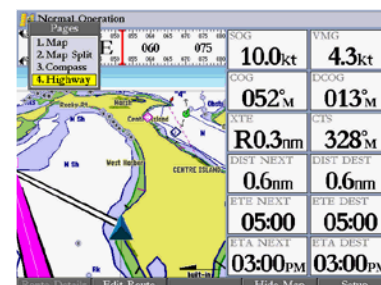
Map Page



Map Split Page



Compass Page

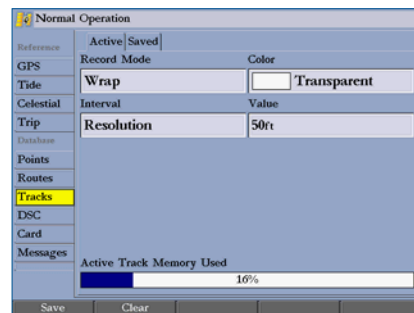


Highway Page

## Using the Main Menu

### To change a setting using the Main Menu:

1. From any page, press and hold **ADJ/MENU** to open the Main Menu.
2. Use the **ROCKER** to select a tab, and then press right or left on the **ROCKER** to select a sub tab.
3. Highlight the field you want to change, and press **ENTER**.
4. Make any changes, and press **ENTER**.
5. Press **QUIT** to return to the main page.

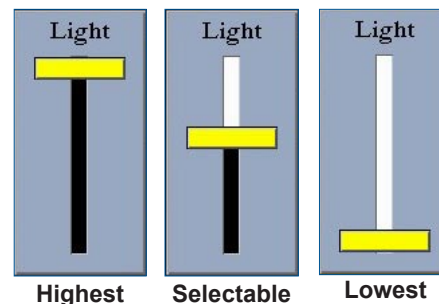


Main Menu

## Adjusting the Backlight

### To adjust the backlight level:

1. Press and release the **POWER** key.
2. Press up or down on the **ROCKER** to adjust the backlight level.
3. Press **ENTER** to quit.



## Using the GPSMAP 2206/2210 Keypad



**POWER/BACKLIGHT**—press and hold to turn the unit on or off. Press and release to adjust the screen backlighting.



**ZOOM**—press up to increase, or press down to decrease the range of the Map Page, Highway Page, and other range-related functions.



**ROCKER**—press up, down, right, or left to move through lists, highlight fields, select options and locations, enter data, or move the map pointer.



**PAGE**—press to cycle through the main pages in sequence or return from a sub page to a main page.



**QUIT**—press to return to a previous page, restore a data field's previous value, or exit out of menus.



**ENTER**—press to select highlighted fields, confirm menu options, or enter data.

**MARK**—press and hold for two seconds to capture your current location and open the Review Waypoint Page.



**ADJ**—press to show available options and features for the current function.

**MENU**—press and hold to open the Main Menu.



**NAV**—press and release to access navigation options.

**MOB** (Man OverBoard)—press and hold to mark your current location and instantly set a return course.



**DATA**—press to toggle the display of a main page with or without function windows and data fields.

**CNFG**—press and hold to open the Configuration window to customize a main page.



**FIND**—press to initiate the Find option, so you can search for user points, map items, and any optional data card information.