

GPSMAP® 376C Quick Reference Guide



The GPS antenna must be in the upright position to receive satellite signals.

IN/OUT—press to zoom in or zoom out on the Map Page.

PAGE/MODE—press to cycle through the main pages in sequence and return the display from a submenu page. Press and hold to switch between Marine Mode and Automotive Mode.

QUIT—press to cycle through the main pages in reverse sequence, revert to the previous value in a data entry field, or cancel a function.

ENTER/MARK—press to select a highlighted option, initiate entry, and then confirm. Press and hold to mark a waypoint.

MENU/Wx—press to view Options Menu for the current page. Press twice to open the Main Menu. Press and hold to turn the Map Page weather off and on.

NAV/MOB—press to open the Navigation Menu window. In Marine Mode, press and hold to activate the MOB function. In Automotive Mode, press and hold to show the Next Turn Page and have the voice prompt announce the next turn.

FIND—press to show the Find Menu.

POWER—press and hold to turn the unit on or off. Press and release to adjust the backlighting and external speaker volume.

ROCKER—press up, down, left, or right to select menu options, enter data, or move the pointer on the Map Page.

To find a waypoint or other item from your current location:

1. From any page, press **FIND**.
2. Highlight a category from the list, and press **ENTER**.
3. Highlight an item in the results list, and press **ENTER**.



Find Menu

Navaid - From Current Location		
Chart - Us 1 1472 (C) (40000)		
○ Pipe	080h	2.8h
○ Pipe	054h	2.8h
○ 50900	196h	2.9h
○ Fix Point	047h	3.0h
▲ "14"	198h	3.0h
○ Pipes	046h	3.0h
○ Fix Point	045h	3.0h
○ "12"	196h	3.0h
○ Fix Point	044h	3.0h

Navaid Search Results

To find an item from another location using the Find menu:

1. From any page, press **FIND**.
2. Press **MENU**. Highlight **Near Other**, and press **ENTER**.
3. Select a reference point on the map, and press **ENTER**. The list shows items nearest to the new map location.

To find an item from another location on the Map Page:

1. From the Map Page, use the **ROCKER** to pan to the location you want, and press **FIND**.
2. Highlight a category from the list, and press **ENTER**.
3. Highlight an item in the results list, and press **ENTER**.



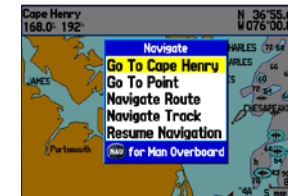
Find From Map Pointer

Tide Prediction Station - From Map Pointer		
Containing		
● Virginia Beach	021h	4.7%
● Brown Cove	336h	6.9%
● Buchanan Creek Entrance	323h	8.5%
● Long Creek	344h	8.6%
● Lynnhaven Inlet, Highway B	339h	9.0%
● Bayville	335h	9.4%
● Cape Henry	007h	9.6%
● False Cape	167h	11.5%
● Little Creek (Rr. Terminal)	323h	12.9%

Search Results

To Go To a highlighted map item:

1. Use the **ROCKER** to highlight the item you want to navigate to on the Map Page.
2. Press **NAV/MOB**, and then press **ENTER**.
3. Follow the magenta route created on the Map Page. You can also use the Compass Page to help you navigate to the point.



Navigate Options with Map Feature highlighted



Navigation shown on the Map Page (Marine Mode)

To activate a Go To from the Find Menu:

1. Press the **NAV/MOB** key.
2. Use the **ROCKER** to highlight **Go To Point**, and press **ENTER**.
3. From the Find menu, highlight **Waypoints**, and press **ENTER**.
4. Select a waypoint from the list, and press **ENTER** to open the Waypoint Review Page.
5. With the **Go To** button highlighted, press **ENTER** to begin navigation.

Use the MOB function to simultaneously mark and set a course to a location for quick response to emergency situations.

To start the MOB function:

1. Press and hold the **NAV/MOB** key, or press the **NAV/MOB** key twice.
2. Press **ENTER** to confirm and begin navigating to the MOB location.



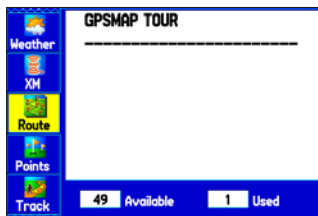
MOB Confirmation Window

When a MOB is initiated, a MOB waypoint is created, and the unit begins to navigate to that point. Use any of the navigation pages to guide you back to the MOB point. The MOB waypoint is stored in the Waypoint list and can be deleted like any other waypoint.

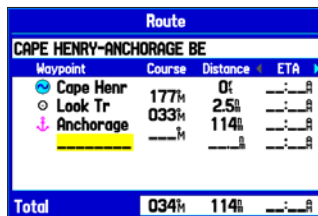
Creating a Route

To create a route using the Find Menu:

1. Press **MENU** twice to open the Main Menu.
2. Highlight the **Route** tab.
3. Highlight the first available blank route slot, and press **ENTER**.
4. Press **ENTER** again to find items to add to the route.



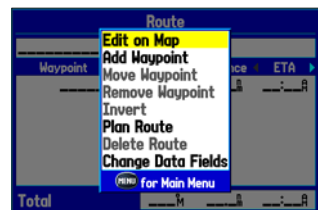
Route Tab



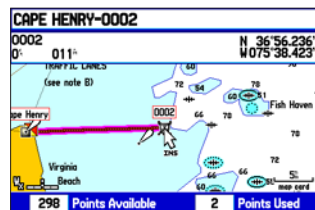
Adding points to the route

To create a route graphically:

1. From the **Route** tab, highlight the first blank slot, and press **ENTER**.
2. On the Route Review Page, press **MENU** to open the options menu.
3. Highlight **Edit on Map**, and press **ENTER**.
4. Highlight a map item, and press **ENTER**.
5. When finished press **QUIT** twice to return to the Route Review Page.



Route Review Page Options Menu

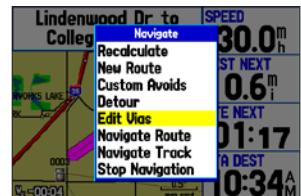


Creating a new route on the map

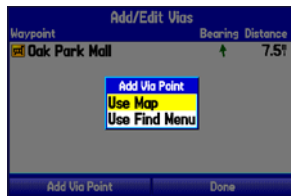
Adding Via Points to Your Route

To add Via Points to your route in Automotive Mode:

1. While navigating your route, press **NAV/MOB**.
2. Use the **ROCKER** to select **Edit Vias**, and press **ENTER**. The Add/Edit Vias Page appears.
3. With the **Add Via Point** button highlighted, press **ENTER**.



Navigate Options



Add Via Point

4. Highlight either **Use Map** or **Use Find Menu**, and press **ENTER**.
5. If you selected **Use Map**, use the **ROCKER** to select an item on the map, and press **ENTER**.

If you selected **Use Find Menu**, select an item from the Find Menu. Remember you can press **MENU** while the Find Menu is open to find an item near another location, such as the destination.

6. Highlight **Done**, and press **ENTER** to apply the new Via Points to the route.

Add/Edit Vias Page



Before a Via Point is added



New Via Point added before the destination

Marking a Waypoint

To mark your current location:

1. Press and hold **ENTER/MARK** until the New Waypoint Page appears.
2. To accept the waypoint with the default name and symbol, highlight **OK**, and press **ENTER/MARK**.
3. To change any information on the New Waypoint Page, highlight the appropriate field, and press **ENTER/MARK**. After entering and confirming your changes, highlight **OK**, and press **ENTER/MARK**.



New Waypoint Page

To create a new waypoint using the Map Page:

1. Press **PAGE** until the Map Page appears.
2. Move the pointer to a map location or map feature.
3. Press and quickly release **ENTER/MARK** to capture the pointer location.

If you have highlighted a map feature, an information page appears after you press **ENTER/MARK**. Use the **ROCKER** to highlight **Save** and press **ENTER/MARK** to save the item as a waypoint. The New Map Waypoint Page appears.

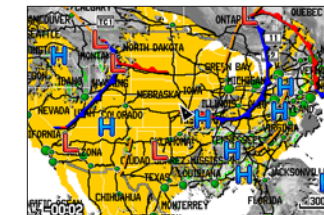
4. To accept the waypoint with the default name and symbol, highlight **OK**, and press **ENTER/MARK**.

To change any information on the New Map Waypoint Page, highlight the appropriate field and press **ENTER/MARK**. After entering and confirming your changes, highlight **OK**, and press **ENTER/MARK**.

Using XM WX Weather and XM Radio

To turn off XM WX Weather on the Map Page:

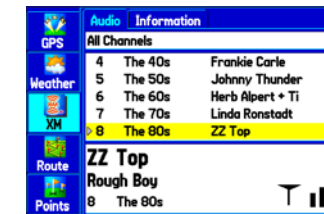
1. Press **PAGE/MODE** until the Map Page appears.
2. Press and hold **MENU/Wx**. On the Map Page, XM WX Weather is turned off.
3. Press and hold **MENU/Wx** to turn XM WX Weather on again.



XM WX Weather

To select an XM Radio channel:

1. Press **MENU** twice to open the Main Menu.
2. Use the **ROCKER** to highlight the **XM** tab.
3. Press right on the **ROCKER** to highlight the **Audio** sub tab.
4. Press up or down on the **ROCKER** to scroll through the list of channels, highlight the channel you want, and then press **ENTER**.



Selecting an XM Radio channel



Adding a channel to Favorites

To add a channel to the Favorites category:

1. Use the **ROCKER** to select a channel, or use the **IN** and **OUT** keys to select a category, and then highlight a channel.
2. Press **MENU**, highlight **Add To Favorites**, and press **ENTER**.
3. With **Yes** highlighted, press **ENTER** again to add the channel to the Favorites category.
4. To view Favorites, use the **IN** and **OUT** keys to change the category to **Favorites**.