

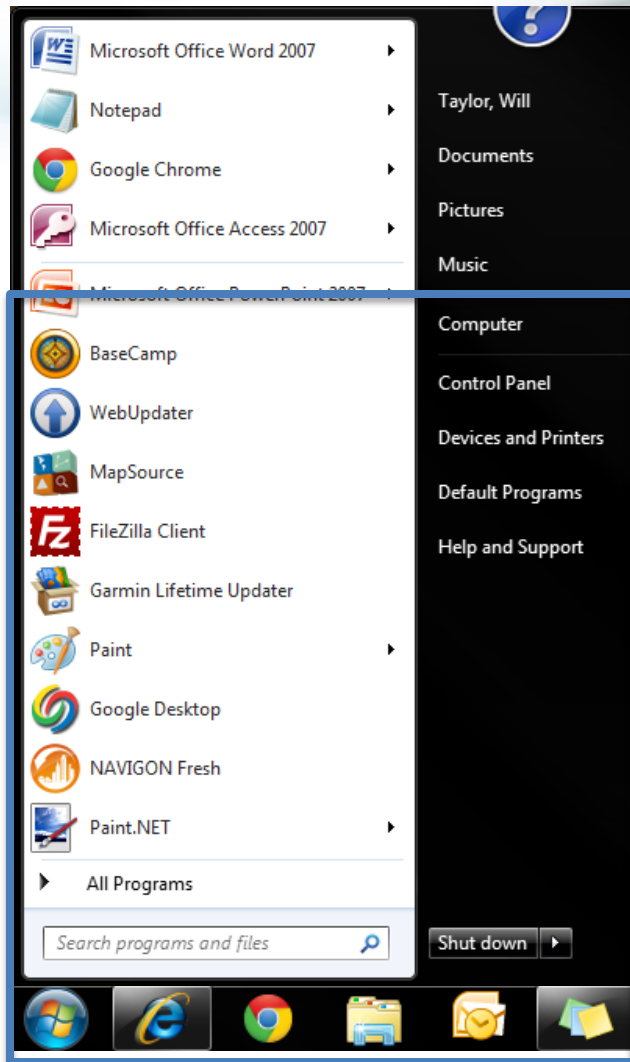
How to locate the GarminDevice.xml file

This guide will show you how to get the
GarminDevice.xml file.

This file has been requested so we can look further
into this issue for you.

Before you start can you ensure you have the device
connect to the computer via a USB Cable.

How to locate the GarminDevice.xml file

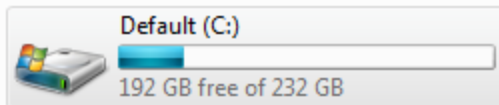


Click the **Windows Start Icon** and then click **Computer** or **My Computer**.

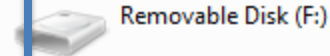
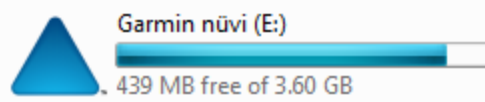
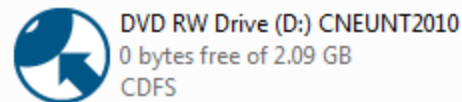
How to locate the GarminDevice.xml file

Double click the **Garmin nüvi** drive.

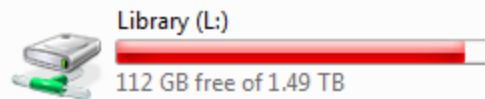
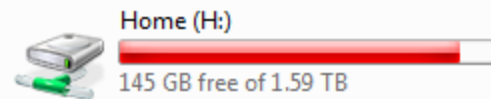
Hard Disk Drives (1)



Devices with Removable Storage (3)

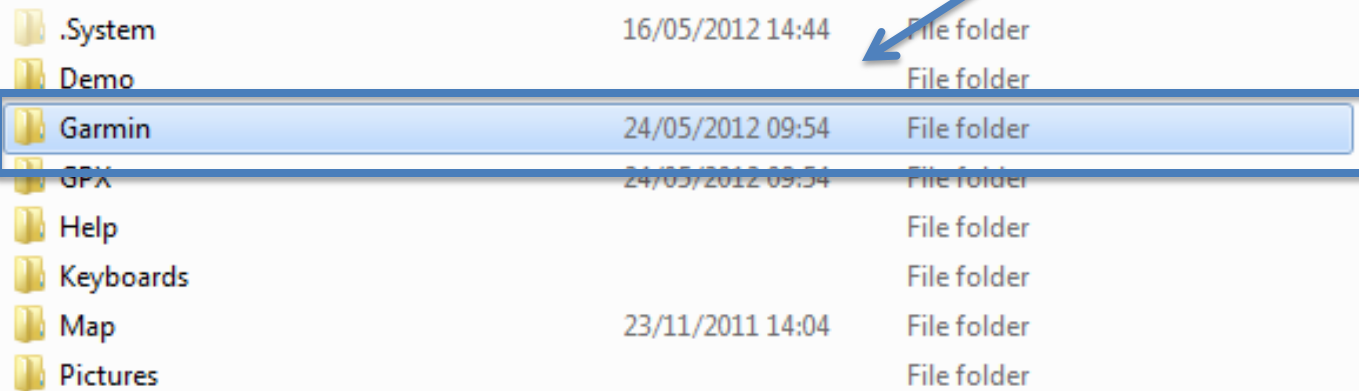


Network Location (2)



How to locate the GarminDevice.xml file

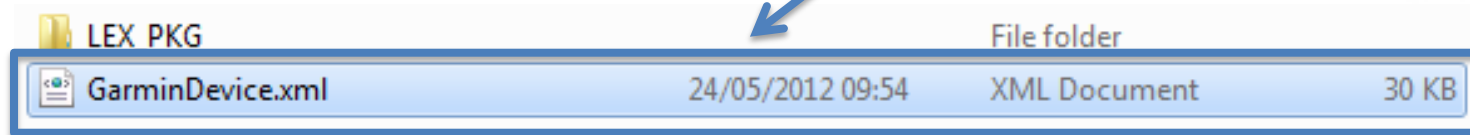
Double-click the **Garmin** folder.



.System	16/05/2012 14:44	File folder
Demo		File folder
Garmin	24/05/2012 09:54	File folder
GPX	24/05/2012 09:54	File folder
Help		File folder
Keyboards		File folder
Map	23/11/2011 14:04	File folder
Pictures		File folder

How to locate the GarminDevice.xml file

Copy the GarminDevice.xml file
and paste it to your Desktop.



You will now need to send the GarminDevice.xml file to us in reply
to the email that was sent you by a Garmin associate.