

WITH WAAS
for even greater accuracy

Since space is at a premium on most boats, we maximized the display on this chartplotter while keeping overall size slim and compact. Whether you choose the bright, 16-color transfective screen

Portable chartplotter in color or monochrome display

of the GPSMAP® 176C or the 12-level grayscale display of the GPSMAP 176, you'll get a clear picture of where you are on the map. Both units offer excellent built-in maps, and they accept data from preprogrammed data cards or MapSource™

CD-ROMs with BlueChart™ marine cartography. Additional cartography includes offshore marine detail, nav aids, street addresses, restaurants, services and more. And they are portable, so they easily go from your boat to your vehicle.



GPSMAP® 176 and 176C specifications

Navigation features

- Waypoints/icons:** 3000 with name, symbol and comments, as well as proximity support
- Routes:** 50 reversible routes with up to 254 points each, plus MOB and TracBack® modes
- Tracks:** 2500 point automatic track log; 15 saved tracks; 500 points per saved track; lets you retrace your path in both directions
- Trip computer:** Trip odometer, stopped time, moving average, moving time, total average, total time, maximum speed, odometer
- Alarms:** Anchor drag, arrival, off-course, proximity waypoint, clock, shallow water and deep water
- Tables:** Built-in celestial tables for best times to fish and hunt, sunrise and sunset, sun and moon by date and position
- Map datums:** More than 100 plus user datum
- Position format:** Lat/Lon, UTM/UPS, Maidenhead, MGRS, Loran TDs and other grids, including user grid

GPS performance

- Receiver:** WAAS enabled, 12 parallel channel GPS receiver continuously tracks and uses up to 12 satellites to compute and update your position
- Acquisition times:**
 - Warm:** Approximately 15 seconds
 - Cold:** Approximately 45 seconds
 - AutoLocate™:** Approximately 2 minutes
- Update rate:** 1/second, continuous
- GPS accuracy:**
 - Position:** < 15 meters, 95% typical*
 - Velocity:** 0.05 meter/sec steady state
- DGPS (USCG) accuracy:**
 - Position:** 3-5 meters, 95% typical
 - Velocity:** 0.05 meter/sec steady state
- DGPS (WAAS) accuracy:**
 - Position:** < 3 meters, 95% typical
 - Velocity:** 0.05 meter/sec steady state
- Dynamics:** 6 g's
- Interfaces:** RS232 with NMEA 0183, RTCM 104 DGPS data format and proprietary GARMIN
- Antenna:** Removable quad-helix

Differential: USCG and WAAS capable

Moving map features

- Basemap:** Detailed Americas basemap with cities, highways, interstates, exit info, rivers, lakes and U.S. tide data
- Uploadable maps:** Accepts optional data cards for detailed maps, including GARMIN BlueChart™ marine cartography

Power

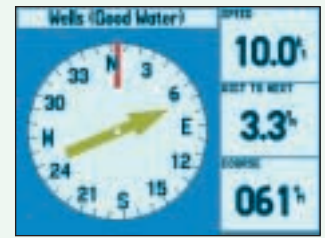
- Source:** Four "AA" batteries (not included)
- Battery life:** 4 to 16 hours based on backlight setting

Physical

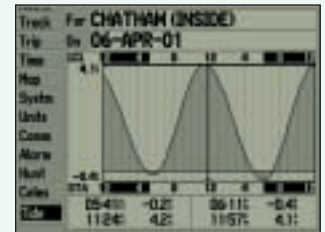
- Size:** 6.18"W x 3.4"H x 2.25"D (15.7 x 8.64 x 5.72 cm)
- Weight:** 1.5 lbs (680 g) with batteries
- Display:** (GPSMAP 176) 3.8" diagonal (9.65 cm) 320 x 240 pixels, 12-level gray high contrast FSTN with backlighting
(GPSMAP 176C) 3.8" diagonal (9.65 cm) 320 x 240 pixels, 16-color transfective display with backlighting
- Case:** Fully gasketed, high impact plastic alloy, waterproof to IEC 529 IPX7 standards
- Temperature range:** 5°F to 158°F (-15°C to 70°C)
- User data storage:** Indefinite, no memory battery required

Accessories

- Standard:** PC interface cable
Power/data cable
Marine mount
Owner's manual
Quick reference guide
- Optional:** Automotive mounting adapter
Beanbag mount
Remote antennas
Deluxe carrying case
12-volt adapter cable
Preprogrammed data cards with BlueChart™ marine cartography
MapSource™ CD-ROMs
8, 16, 32, 64 and 128 MB data cards
USB data card programmer
PC interface cable with 12-volt adapter



Pointer page provides steering guidance as you navigate and displays your speed, distance to destination and more.



The GPSMAP 176 and GPSMAP 176C feature built-in tide data for the U.S.A.



GARMIN's optional BlueChart™ marine cartography includes nav aids, depth contours and more.

©2001 GARMIN Corporation



GARMIN International
1200 East 151st Street
Olathe, Kansas 66062, U.S.A.
913/397.8200 fax 913/397.8282

GARMIN (Europe) Ltd.
Unit 5, The Quadrangle
Abbey Park Industrial Estate
Romsey, SO51 9AQ, U.K.
44/1794.519944 fax 44/1794.519222

GARMIN (Asia) Corporation
No. 68, Jangshu 2nd Rd.
Shijr, Taipei County, Taiwan
886/2.2642.9199 fax 886/2.2642.9099

www.garmin.com

Specifications are preliminary and subject to change without notice.

* Subject to accuracy degradation to 100m 2DRMS under the U.S. Department of Defense imposed Selective Availability Program.

GPSMAP 176



GPSMAP 176C

