

Garmin's GPSMAP 3000 series chartplotters

deliver top-of-the-line navigation and

Full-featured plotters show you the big picture

interface options along with exceptional

display quality. Whether you choose the

5, 6 or 10-inch display, you'll get bold,

sunlight-readable color and configurable

window formats. The 3006C and 3010C

also feature a PC monitor output and 2

video inputs, so you can keep an eye

on the stern or the engine room.

For advanced capabilities, these plotters

have a built-in high-speed marine

network that can link additional displays

and remote sensors for live XM WX

Satellite Weather, onboard Garmin radar

and sonar data overlays. Plus, all accept

optional BlueChart® marine cartography

for detailed offshore maps.





Navigation features

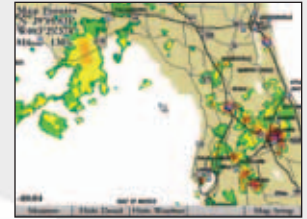
- Waypoints/icons:** 4000 with name, symbol and comment, with support for proximity waypoints
- Routes:** 50 reversible routes with up to 300 points each, plus MOB and TracBack® modes
- Track log:** 10,000 point automatic track log, with 15 saved tracks, 700 points per saved track, lets you retrace your path in both directions
- Alarms:** Anchor drag, arrival, off course, shallow water, proximity waypoint, deep water, clock and battery
- Tables:** Built-in celestial tables, with sun and moon rise, set and location; tide tables for the U.S.
- Map datums:** More than 100, plus user datum
- Position format:** Lat/Lon, UTM/UPS, Loran TDs and other grids, including user grid
- Languages:** 10 (with software update)

GPS performance (with GPS)

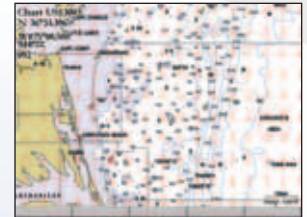
- Receiver:** WAAS enabled
- Acquisition times:**
 - Warm:** Approximately 15 seconds
 - Cold:** Approximately 45 seconds
 - AutoLocate™:** Approximately 5 minutes
- Update rate:** 1/second, continuous
- GPS accuracy:**
 - Position:** < 15 meters, 95% typical*
 - Velocity:** 0.05 meter/sec steady state
- DGPS (WAAS) accuracy:**
 - Position:** < 3 meters, 95% typical
 - Velocity:** 0.05 meter/sec steady state
- Dynamics:** 6 g's
- Interfaces:** 3 (3005C) or 4 (3006C & 3010C) data ports allow for NMEA 0183 and proprietary Garmin
3006C & 3010C both have 2 composite video inputs
1 VGA PC monitor output

Moving map features

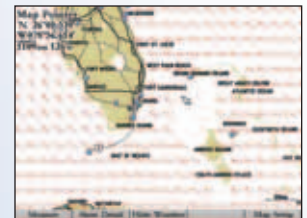
- Basemap:** Built-in worldwide marine basemap with coastlines, rivers, lakes, political boundaries, tide data for the U.S., cities and interstates
- Plotting scales:** 20 ft. to 800 nm with dedicated push-button zoom control
- Power**
- Source:** 10-35v DC
- Physical**
- Case:** Fully gasketed, high-impact plastic alloy, waterproof to IEC 60529 IPX7 standards
- Temperature range:** 5° F to 122° F (-15° C to 50° C)
- Accessories**
- Standard:** Infrared remote control (3006 and 3010 only)
GPS 17 external remote sensor
Power/data cable
Bail mount
Template for flush mounting
Protective front cover
Owner's manual
Quick reference guide
- Optional:** Preprogrammed data cards with BlueChart® marine cartography
USB data card programmer
Second mounting station
MapSource® CDs
BlueChart®
Recreational Lakes with Fishing Hot Spots®
Marine data management kit
GDL™ 30/30A satellite weather receiver
GMS™ 10 Network port expander
GMR™ 20/GMR 40 radar scanner
GSD™ 20 remote sounder
Marine network cables



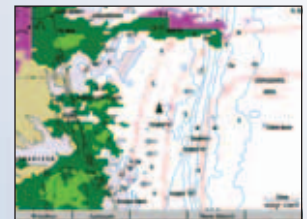
NEXRAD radar with precipitation type (animated, high resolution)



Wind speed and direction



Wave direction



Wave height

©2005 Garmin Ltd. and its subsidiaries



Garmin International, Inc.
1200 East 151st Street
Olathe, Kansas 66062, U.S.A.
913/397.8200 fax 913/397.8282

Garmin (Europe) Ltd.
Unit 5, The Quadrangle
Abbey Park Industrial Estate
Romsey, SO51 9DL, U.K.
44/1794.519944 fax 44/1794.519222

Garmin Corporation
No. 68, Jangshu 2nd Rd.
Shijr, Taipei County, Taiwan
886/2.2642.9199 fax 886/2.2642.9099

www.garmin.com

* Subject to accuracy degradation to 100m 2DRMS under the U.S. Department of Defense Selective Availability Program.

Here's how the units are different

3005C



3006C



3010C



	3005C	3006C	3010C
display	5" diagonal	6.4" diagonal	10.4" diagonal
size	7.8"W x 4.7"H x 3.0"D	10.25"W x 6.5"H x 3.25"D	13.1"W x 8.8"H x 3.25"D
weight	1.8 lbs.	3.2 lbs.	4.5 lbs.
power usage	12 watts max. at 10v DC	25 watts max. at 10v DC	25 watts max. at 10v DC
serial ports	3	4	4
datacard	1 slot	2 slots	2 slots
remote control	no	yes	yes
video/audio	no	yes	yes