

WITH WAAS
for even greater accuracy

With the GPSMAP® 2006/2006C or 2010/2010C onboard, you won't miss a thing. Each of these chartplotters with remote WAAS sensors can pinpoint your location to within 3 meters on average.

Exceptional resolution from full-featured chartplotters

Whether you choose the 10-inch or 7-inch display, available in color or grayscale, you'll get outstanding contrast and resolution, even in direct sunlight. Their high-speed processors make for extremely fast redraw rates. In addition to their built-in basemaps, these units accept detailed BlueChart™ marine cartography available from optional data cards. Detail includes spot soundings, nav aids, depth contours, port information and tidal predictions.



GPSMAP® 2006/2006C AND 2010/2010C specifications

Navigation features

- Waypoints/icons:** 3000 with name, symbol and comment, with support for proximity waypoints
- Routes:** 50 reversible routes with up to 254 points each, plus MOB and TracBack® modes
- Track log:** 5,000 point automatic track log, with 20 saved tracks, 1000 points per saved track, lets you retrace your path in both directions
- Alarms:** Anchor drag, arrival, off course, shallow water, proximity waypoint, deep water, clock and battery
- Tables:** Built-in celestial tables, with sun and moon rise, set and location; tide tables for the U.S.
- Map datums:** More than 100, plus user datum
- Position format:** Lat/Lon, UTM/UPS, Loran TDs and other grids, including user grid
- Languages:** 10

GPS performance (with GPS 17N)

- Receiver:** WAAS enabled, 12 parallel channel GPS receiver continuously tracks and uses up to 12 satellites to compute and update your position
- Acquisition times:**
 - Warm:** Approximately 15 seconds
 - Cold:** Approximately 45 seconds
 - AutoLocate™:** Approximately 5 minutes
- Update rate:** 1/second, continuous
- GPS accuracy:**
 - Position:** < 15 meters, 95% typical*
 - Velocity:** 0.05 meter/sec steady state
- DGPS (USCG) accuracy:**
 - Position:** 3-5 meters, 95% typical
 - Velocity:** 0.05 meter/sec steady state
- DGPS (WAAS) accuracy:**
 - Position:** < 3 meters, 95% typical
 - Velocity:** 0.05 meter/sec steady state
- Dynamics:** 6 g's
- Interfaces:** 3 data ports allow for NMEA 0183 and proprietary GARMIN

Moving map features

- Basemap:** Built-in worldwide basemap with coastlines, rivers, lakes, political boundaries, tide data for the U.S., cities and interstates
- Data cartridges:** User-programmable or preprogrammed micro cartridges containing detailed BlueChart™ marine cartography

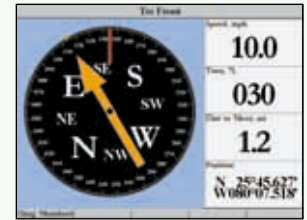
- Plotting scales:** 120 ft. to 4096 nm with dedicated push-button zoom control
- Power Source:** 8-32v DC
- Usage:** GPSMAP 2006/2006C = 24 watts max. at 8v DC
GPSMAP 2010/2010C = 24 watts max. at 8v DC

Physical

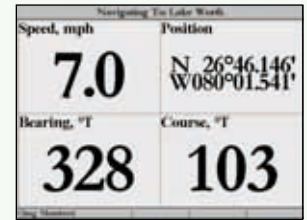
- Size:** GPSMAP 2006/2006C = 10.25" W x 6.5" H x 3.25" D
GPSMAP 2010/2010C = 13.1" W x 8.8" H x 3.0" D
- Weight:** GPSMAP 2006/2006C = 3.0 lbs. (1.4 kg)
GPSMAP 2010/2010C = 5.0 lbs. (2.3 kg)
- Display:** GPSMAP 2006 = 7.2" diagonal (18.3 cm) high-resolution, 10-level grayscale LCD with backlighting (640 x 480 pixels)
GPSMAP 2006C = 6.4" diagonal (16.3 cm) high-resolution, 256-color LCD with backlighting (640 x 480 pixels)
GPSMAP 2010 = 9.4" diagonal (23.9 cm) high-resolution, 10-level grayscale LCD with backlighting (640 x 480 pixels)
GPSMAP 2010C = 10.4" diagonal (26.4 cm) high-resolution, 256-color LCD with backlighting (640 x 480 pixels)
- Case:** Fully gasketed, high-impact plastic alloy, waterproof to IEC 529 IPX7 standards
- Temperature range:** 5° F to 158° F (-15° C to 70° C)

Accessories

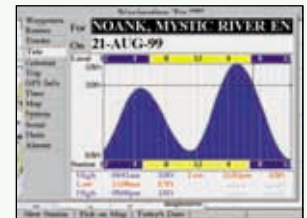
- Standard:** GPS 17N external remote sensor
Power/data cable
Bail mount
Template for flush mounting
Protective front cover
Owner's manual
Quick reference guide
- Optional:** Blank or preprogrammed data cards with BlueChart™ marine cartography
AC/PC adapter
12-volt adapter cable
USB data card programmer
Second mounting station
DGPS 53 beacon receiver
MapSource™ CDs:
U.S. Waterways & Lights
Fishing Hot Spots®
Roads & Recreation
WorldMap



The navigation page displays speed, distance to destination and more.



Big numbers display makes data fields visible from a distance.



Contains built-in tide information for the U.S.

©2001 GARMIN Corporation



GARMIN International
1200 East 151st Street
Olathe, Kansas 66062, U.S.A.
913/397.8200 fax 913/397.8282

GARMIN (Europe) Ltd.
Unit 5, The Quadrangle
Abbey Park Industrial Estate
Romsey, SO51 9AQ, U.K.
44/1794.519944 fax 44/1794.519222

GARMIN (Asia) Corporation
No. 68, Jangshu 2nd Rd.
Shijr, Taipei County, Taiwan
886/2.2642.9199 fax 886/2.2642.9099

www.garmin.com

Specifications are preliminary and subject to change without notice.

* Subject to accuracy degradation to 100m 2DRMS under the U.S. Department of Defense imposed Selective Availability Program.

GPSMAP 2006C



GPSMAP 2010

