

BlueChart g2 Vision

Preprogrammed BlueChart g2 Vision SD cards allow you to get the most out of your Garmin marine GPS unit. In addition to detailed marine charting, BlueChart g2 Vision features:

- **Mariner’s Eye 3D**—a bird’s eye view from above and behind the boat, for a more visual navigation aid.
- **Fish Eye 3D**—an underwater view that visually represents the sea floor according to the chart’s information.
- **Fishing Chart**—view the chart without navigational data, leaving only the bottom contours and depth soundings.
- **High Resolution Satellite Imagery**—high resolution satellite images are provided for a realistic view of the land and water on the Navigation Chart.
- **Aerial Photos**—you can view marinas and other navigationally significant aerial photos to help you visualize your surroundings.
- **Detailed Roads and POI data**—you can search for and view roads, restaurants, attractions, and other points of interest (POIs) along the shore.
- **Tide and Current Data**—you can access tide and current station information.
- **Auto Guidance**—you can use the Auto Guidance technology suggest the best passage based on the chart data.

This guide provides an overview of some of these features. For more detailed information, see the owner’s manual for your Garmin marine GPS unit. Not all of these features are available on every card.

Using the SD card

You can insert or remove a BlueChart g2 Vision SD card while your Garmin GPS unit is on or off. Insert the SD card, label up, into the open SD card slot on your Garmin GPS unit and press in until it clicks. Press in again to eject the SD card.



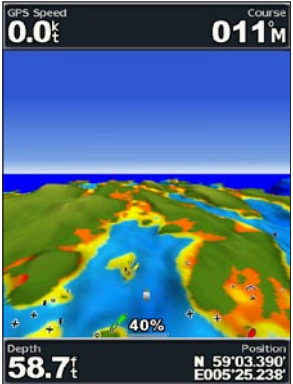
BlueChart g2 Vision SD cards are not waterproof. When you are not using the card, keep it in the original packaging for safekeeping and store it away from exposure to sun and rain. BlueChart g2 Vision SD cards are susceptible to damage from static electricity. In low humidity environments, you should ground yourself on a large metal object before handling the card.



**NOTE:** BlueChart g2 Vision data cannot be transferred from the SD card to your PC for backup or viewing purposes. The SD card can only be used on BlueChart g2 Vision compatible Garmin GPS units.

Mariner’s Eye 3D

**Mariner’s Eye 3D** provides a bird’s eye view from above and behind the boat (according to your course), and provides a visual navigation aid. This view is helpful when navigating tricky shoals, reefs, bridges, or channels. **Mariner’s Eye 3D** is beneficial when trying to identify entry and exit routes in unfamiliar harbors or anchorages.

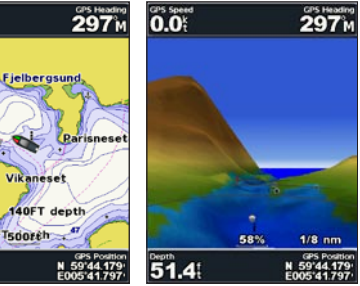


Mariner’s Eye 3D (Water Hazard Colors)

Fish Eye 3D

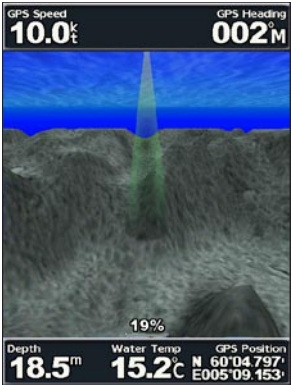
**Fish Eye 3D** provides an underwater view of the sea floor or lake bottom based on the chart data. You can customize the view as you prefer:

- **Sonar Cone**—shows the area covered by your transducer.
- **Sonar Data**—you can show the sonar readings received by your transducer for the best combination of sonar and mapping.
- **Tracks**—keep a log of where you’ve been and view it on the map.
- **Numbers**—numeric cruising and navigation information.



Navigation Chart Mariner’s Eye View

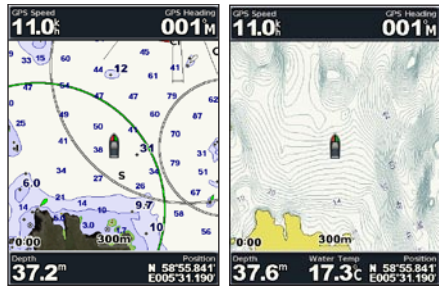
**Colors**—you can choose between **Normal** (Default), **Water Hazard**, and **All Hazard**. The **Normal** setting highlights the land as you would see it from the water, and the **Hazard** settings indicate shallow water (and land) with a color scale. Blue indicates deep water, yellow is shallow water, red is very shallow, and green indicates land. (The **All Hazard** setting indicates land as well as very shallow water in red.)



Fish Eye 3D

The Fishing Chart

The **Fishing Chart** features detailed bathymetric data to emphasise bottom contours and depth soundings. The **Fishing Chart also** removes navigation information from the map to reduce clutter and help give clearer definition to the sea floor.



Navigation Chart Fishing Chart

High Resolution Satellite Imagery

You can overlay high-resolution satellite images on the land, sea, or both portions of the **Navigation Chart**.

Satellite imagery options:

When you enable the photo overlay on your unit, you can customize how the satellite imagery appears on the map:

- **Off**—standard chart information is shown.
- **Land Only**—standard chart information is shown on water with photos overlaying the land.
- **On**—photos overlay both the water and the land at a specified opacity. The higher you set the percentage, the more the satellite photos will cover both land and water.

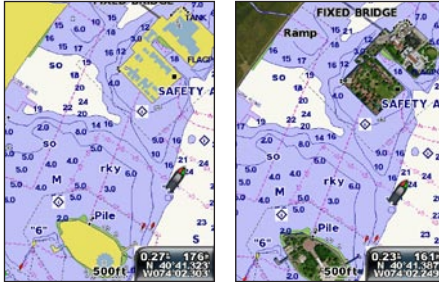


Photo Overlay Off Land Only Photo Overlay



Photo Overlay 50% Photo Overlay 100%

Aerial Photos

BlueChart g2 Vision SD cards contain aerial photographs of many landmarks, bridges, marinas, and harbors.



Perspective Overhead

Viewing Aerial Photos:

- Aerial photos are indicated by a camera icon on the **Navigation Chart**.
- A perspective cone attached to the camera icon shows the angle at which the aerial photo was taken.
- A camera icon without a perspective cone indicates an overhead photo.
- You have the option to view a photo on the full screen, where you can zoom in or out.



Marine Services and Points of Interest (POI)

In many areas, BlueChart g2 Vision maps feature Marine Services and other land-based points of interest. You can locate these POIs from the **Where To?** menu on your Garmin GPS unit, or you can access them from the **Navigation Chart** by selecting the icon.

Marinas and Marine Services

- Many Marinas and Marine Services include contact information such as phone number and VHF channel as well as services offered.
- Many other POI locations include address and phone information.
- All available information is listed on the information page for the selected Marina, Marine Service, or other POI.





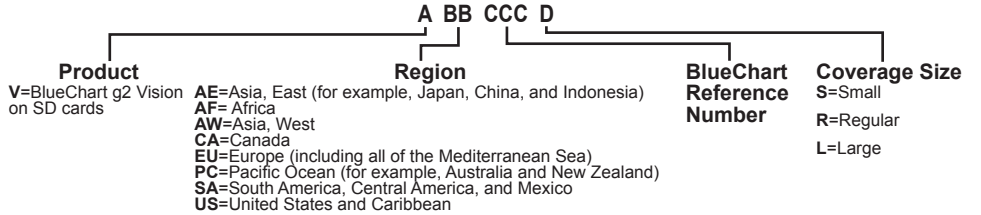
Product Registration

Help us better support you by completing our online registration today! By registering your purchase, you are assured of notification of product updates or information about new products.

Have the ID code of your preprogrammed BlueChart g2 Vision SD card handy, connect to Garmin’s Web site at [www.garmin.com/registration](http://www.garmin.com/registration) and follow the instructions.

To read the ID code on a BlueChart g2 Vision SD Card:

BlueChart g2 Vision SD cards have a seven-digit ID code. This identification system uses the following conventions:



Contact Garmin

If you encounter any difficulty while using your BlueChart g2 Vision card, or if you have any questions, in the USA contact Garmin Product Support by phone: 913/397.8200 or 800/800.1020, Monday–Friday, 8AM–5 PM Central Time; or go to [www.garmin.com/contactUs](http://www.garmin.com/contactUs), and click on Technical Product Support; or send an e-mail to [cartography@garmin.com](mailto:cartography@garmin.com). In Europe, contact Garmin (Europe) Ltd. at 44/0870.8501241.

Reporting Chart Errors

Even when a feature is shown on the paper chart, it can be overlooked or misspelled during the data entry process. These are small problems that can be easily corrected and do not affect the quality of the overall BlueChart data. If you notice something missing or incorrect in the BlueChart data, first check the best available scale paper charts of the area to see how the feature is represented on the paper chart. If we have not represented it accurately, or if you know additional information about the feature, please visit the maps and charts section of Garmin’s Web site and fill out the online error report form. You can find this form at [www.garmin.com/cartography](http://www.garmin.com/cartography). On the left side of the page is the link for Error Report Form.

Warranty Information

Examine your BlueChart g2 Vision SD card for damage immediately upon receipt. Garmin accepts returned cards within 10 days of the purchase date, if the card is found to be defective.

**To purchase BlueChart g2 Vision SD cards:** Contact Garmin at 800/800.1020, or visit the Garmin Web site at [www.garmin.com/cartography/onthewater/](http://www.garmin.com/cartography/onthewater/), and click the link under BlueChart g2 Vision for Preprogrammed SD Cards.

Garmin Programs

**These programs apply to the U.S. market only.** These programs are *not* available through our European or Asian offices. All programs listed are available directly from Garmin U.S. to end-users only. Garmin requires valid proof of purchase to be eligible for the following programs.

Garmin believes that updates are an extremely critical issue for Marine Cartography, and we are committed to providing our customers with regular semi-annual updates. As updates occur, we will make every effort to ensure that the areas of coverage for a given card remain the same. Updates may include new data or NTM (Notice to Mariners) changes. Any changes can be viewed on details page for each card.

**Buyer Protection Policy:** If a BlueChart g2 Vision card is updated within 30 days of the original purchase date, you may receive one free update. The identification number and coverage area must remain the same. Garmin requires valid proof of purchase to be eligible for this program.

**Update/trade-in program:** Garmin will strive to offer semi-annual updates. If you own a factory preprogrammed BlueChart g2 Vision SD card that is outdated, or would like to purchase a card for a different coverage area, Garmin offers an Update/Trade-In program. Simply send us your old factory preprogrammed BlueChart g2 Vision SD card, and receive a 50% discount towards Garmin’s list price on any factory preprogrammed BlueChart g2 Vision SD card that includes sizes of S(mall), R(egular), and L(arge). Only one update or trade-in per new BlueChart g2 Vision card is allowed. Garmin requires valid proof of purchase to be eligible for this program.

**Upgrading from G-Charts to BlueChart g2 Vision SD Cards:** If you have previously used Garmin’s G-Chart line of electronic maps, please note that we have discontinued support for that product line. Additionally, G-Charts will not work in our BlueChart g2 Vision-compatible chartplotter product line. Garmin provides a 25% discount on new BlueChart g2 Vision SD cards for end-users who send us an old G-Chart. This is a one-for-one discount.

**Upgrading from BlueChart or BlueChart g2 to BlueChart g2 Vision SD Cards:** Please note that BlueCharts and BlueChart g2 cards will not work in our BlueChart g2 Vision-compatible chartplotter product line. If you have previously used Garmin’s BlueChart or BlueChart g2 line of electronic maps, Garmin provides a 25% discount on new BlueChart g2 Vision SD card for end-users who send us an old BlueChart or BlueChart g2 card. This is a one-for-one discount.

**To return BlueChart g2 Vision cards for an update:** Contact Garmin Cartography at 800/800.1020 (or e-mail at: [cartography@garmin.com](mailto:cartography@garmin.com)) to obtain a Return Material Authorization (RMA) number. The return authorization number must appear on the outside of the shipping package, and the original card must be shipped freight prepaid to Garmin at: 1200 East 151st Street, Olathe, KS 66062.

© 2007 Garmin Ltd. or its subsidiaries

Garmin International, Inc. 1200 East 151 <sup>st</sup> Street, Olathe, Kansas 66062, USA Tel. (913) 397.8200 or (800) 800.1020 Fax (913) 397.8282	Garmin (Europe) Ltd. Liberty House Hounslow Business Park, Southampton, Hampshire, SO40 9RB UK Tel. +44 (0) 870.8501241 (outside the UK) 0808 2380000 (within the UK) Fax +44 (0) 870.8501251	Garmin Corporation No. 68, Jangshu 2 <sup>nd</sup> Road, Shijr, Taipei County, Taiwan Tel. 886/2.2642.9199 Fax 886/2.2642.9099
---	---	--

All rights reserved. Except as expressly provided herein, no part of this manual may be reproduced, copied, transmitted, disseminated, downloaded or stored in any storage medium, for any purpose without the express prior written consent of Garmin.

Information in this document is subject to change without notice. Garmin reserves the right to change or improve its products and to make changes in the content without obligation to notify any person or organization of such changes or improvements. Visit the Garmin Web site ([www.garmin.com](http://www.garmin.com)) for current updates and supplemental information concerning the use and operation of this and other Garmin products.

Garmin® is a trademark of Garmin Ltd. or its subsidiaries, registered in the USA and other countries. BlueChart®, and G-Chart® are registered trademarks, and g2 Vision is a trademark of Garmin Ltd. or its subsidiaries. These trademarks may not be used without the express permission of Garmin.

SD™ is a trademark of SanDisk Corporation, registered in the United States and other countries.

Garmin makes no warranty as to the accuracy or completeness of map data in this product and disclaims any and all express, implied or statutory warranties, including any implied warranty of merchantability or fitness for a particular purpose. It is the user’s responsibility to use this product prudently. This product is intended to be used only as a travel aid and must not be used for any purpose requiring precise measurement of direction, distance, location or topography.

Software License Agreement

BY USING BLUECHART g2 VISION, YOU AGREE TO BE BOUND BY THE TERMS AND CONDITIONS OF THE FOLLOWING SOFTWARE LICENSE AGREEMENT. PLEASE READ THIS AGREEMENT CAREFULLY.

Garmin grants you a limited license to use the software embedded in this device (the “Software”) in binary executable form in the normal operation of the product. Title, ownership rights, and intellectual property rights in and to the Software remain in Garmin. You acknowledge that the Software is the property of Garmin and is protected under the United States of America copyright laws and international copyright treaties. You further acknowledge that the structure, organization, and code of the Software are valuable trade secrets of Garmin and that the Software in source code form remains a valuable trade secret of Garmin. You agree not to decompile, disassemble, modify, reverse assemble, reverse engineer, or reduce to human readable form the Software or any part thereof or create any derivative works based on the Software. You agree not to export or re-export the Software to any country in violation of the export control laws of the United States of America.

